



[Go to Product page](#)

Datasheet for ABIN912240

anti-PTGER2 antibody (AA 271-358) (Alexa Fluor 647)

1 Image

Overview

Quantity:	100 µL
Target:	PTGER2
Binding Specificity:	AA 271-358
Reactivity:	Human, Mouse, Sheep
Host:	Rabbit
Clonality:	Polyclonal
Conjugate:	This PTGER2 antibody is conjugated to Alexa Fluor 647
Application:	Western Blotting (WB), Flow Cytometry (FACS), Immunofluorescence (Paraffin-embedded Sections) (IF (p)), Immunofluorescence (Cultured Cells) (IF (cc))

Product Details

Immunogen:	KLH conjugated synthetic peptide derived from human Prostaglandin E Receptor EP2
Isotype:	IgG
Cross-Reactivity:	Human, Mouse, Sheep
Predicted Reactivity:	Rat,Dog,Cow,Pig,Rabbit
Purification:	Purified by Protein A.

Target Details

Target:	PTGER2
Abstract:	PTGER2 Products

Target Details

Background: Synonyms: EP2, Prostaglandin E2 receptor EP2 subtype, PGE receptor EP2 subtype, PGE2 receptor EP2 subtype, Prostanoid EP2 receptor, PTGER2
Background: Receptor for prostaglandin E2 (PGE2). The activity of this receptor is mediated by G(s) proteins that stimulate adenylate cyclase. The subsequent raise in intracellular cAMP is responsible for the relaxing effect of this receptor on smooth muscle.

Gene ID: 5732

UniProt: [P43116](#)

Application Details

Application Notes: FCM 1:20-100
IF(IHC-P) 1:50-200
IF(IHC-F) 1:50-200
IF(ICC) 1:50-200

Restrictions: For Research Use only

Handling

Format: Liquid

Concentration: 1 µg/µL

Buffer: Aqueous buffered solution containing 0.01M TBS (pH 7.4) with 1 % BSA, 0.03 % Proclin300 and 50 % Glycerol.

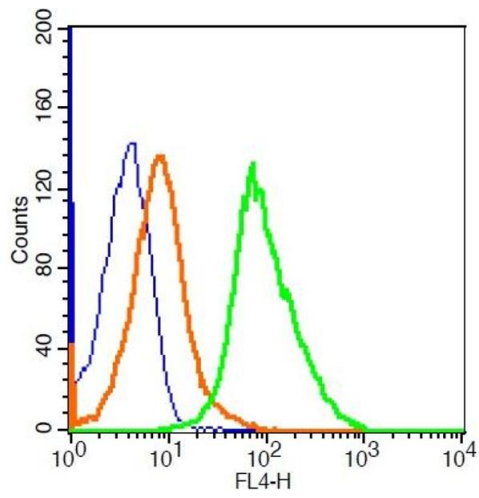
Preservative: ProClin

Precaution of Use: This product contains ProClin: a POISONOUS AND HAZARDOUS SUBSTANCE, which should be handled by trained staff only.

Storage: -20 °C

Storage Comment: Store at -20°C. Aliquot into multiple vials to avoid repeated freeze-thaw cycles.

Expiry Date: 12 months



Flow Cytometry

Image 1. A549 cells probed with Prostaglandin E Receptor EP2 Antibody, ALEXA FLUOR® 647 Conjugated (bs-4196R-A647) at 5ug for 30 minutes compared to control cells (blue) and isotype control (orange).