

## Datasheet for ABIN920695

**anti-ABCC5 antibody**

## 2 Images

[Go to Product page](#)

## Overview

Quantity:	1 mL
Target:	ABCC5
Reactivity:	Human
Host:	Rat
Clonality:	Monoclonal
Conjugate:	This ABCC5 antibody is un-conjugated
Application:	Western Blotting (WB), Immunohistochemistry (IHC), Immunocytochemistry (ICC), Flow Cytometry (FACS)

## Product Details

Clone:	M5I-10
--------	--------

## Target Details

Target:	ABCC5
Alternative Name:	MRP5 ( <a href="#">ABCC5 Products</a> )
Background:	Synonyms: ABCC5
Pathways:	<a href="#">Glycosaminoglycan Metabolic Process</a>

## Application Details

Application Notes:	Immunohistochemistry: For acetone-fixed frozen sections, use at a 1:20 dilution followed by incubation with rabbit anti-rat Ig and a monoclonal rat APAAP complex. Alternatively, after
--------------------	---

## Application Details

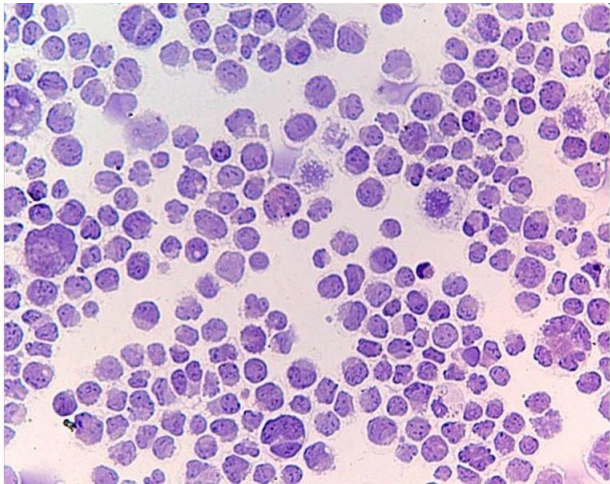
incubation with M5I-10 at a 1:20 dilution and washing, slides can be incubated with biotinylated rabbit anti-rat Ig and streptavidin conjugated to horseradish peroxidase. Immunocytochemistry: For acetone-fixed cytospin preparations, use at a 1:20-1:50 dilution. Western blot: Use at a 1:20-1:50 dilution followed by anti-rat-HRP. Flow cytometry: Optimal conditions still to be determined. MRP5 expression as determined by anti-MRP5 clone M5I-10 HEK cells HEK cells transfected with MRP5

Restrictions: For Research Use only

## Handling

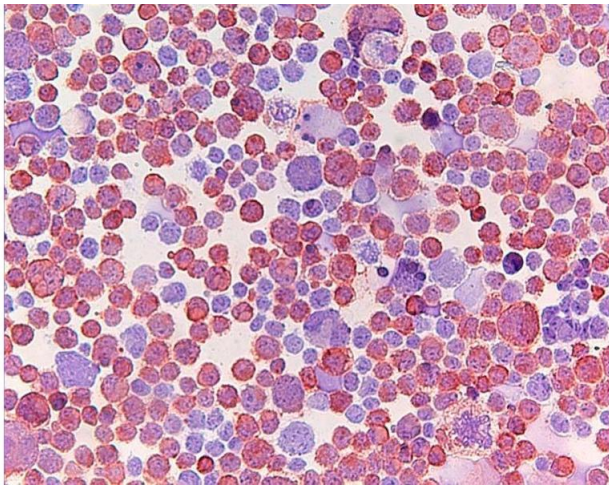
Format:	Liquid
Buffer:	1 mL (>200 tests) monoclonal antibody at 250 µg IgG/mL in serum-free culture supernatant with protein stabilizer and 0.1% sodium azide.
Preservative:	Sodium azide
Precaution of Use:	This product contains sodium azide: a POISONOUS AND HAZARDOUS SUBSTANCE which should be handled by trained staff only.
Storage:	-20 °C

## Images



### Immunohistochemistry

Image 1.



## Immunohistochemistry

Image 2.