

Datasheet for ABIN920696

anti-ABCC10 antibody**2** Images[Go to Product page](#)

Overview

| | |
|--------------|--|
| Quantity: | 1 mL |
| Target: | ABCC10 |
| Reactivity: | Human |
| Host: | Rat |
| Clonality: | Monoclonal |
| Conjugate: | This ABCC10 antibody is un-conjugated |
| Application: | Western Blotting (WB), Immunohistochemistry (IHC), Flow Cytometry (FACS), Immunocytochemistry (ICC) |

Product Details

| | |
|--------|-------|
| Clone: | M7I-3 |
|--------|-------|

Target Details

| | |
|-------------------|--|
| Target: | ABCC10 |
| Alternative Name: | MRP7 (ABCC10 Products) |
| Background: | Synonyms: ABCC10 |

Application Details

| | |
|--------------------|---|
| Application Notes: | Immunohistochemistry: For acetone-fixed frozen sections, use at a 1:20 dilution followed by incubation with rabbit anti-rat Ig and a monoclonal rat APAAP complex. Alternatively, after incubation with M7I-3 at a 1:20 dilution and washing, slides can be incubated with biotinylated |
|--------------------|---|

Application Details

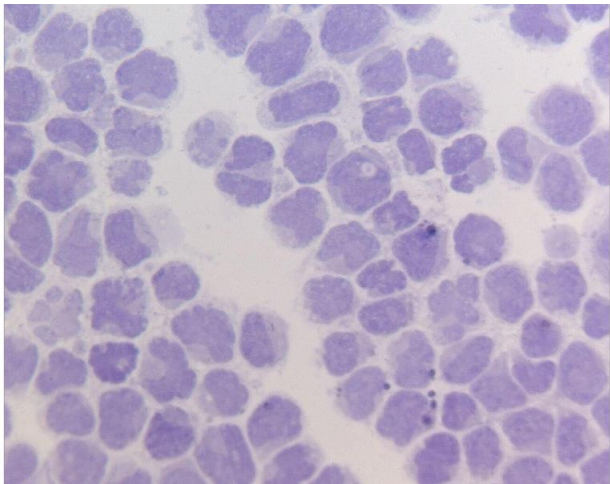
rabbit anti-rat Ig and streptavidin conjugated to horseradish peroxidase. Immunocytochemistry: For acetone-fixed cytospin preparations, use at a 1:20-1:50 dilution. Western blot: Use at a 1:20-1:50 dilution followed by anti-rat-HRP. Flow cytometry: Optimal conditions still to be determined. MRP7 expression as determined by MRP7 clone M7I-3. HEK cells HEK cells transfected with MRP7

Restrictions: For Research Use only

Handling

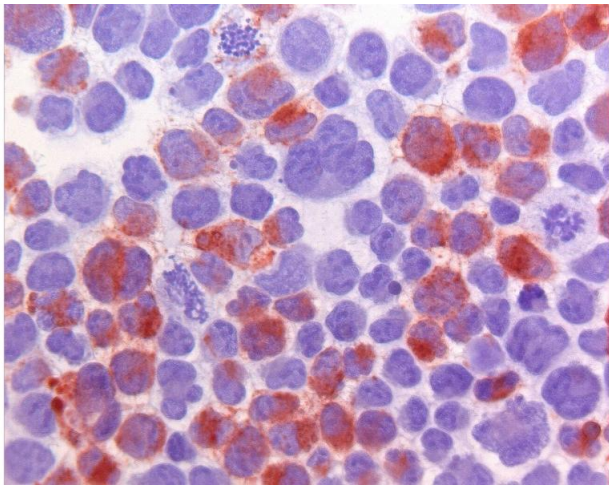
| | |
|--------------------|---|
| Format: | Liquid |
| Buffer: | 1 mL (>200 tests) monoclonal antibody at 250 µg IgG/mL in serum-free culture supernatant with protein stabilizer and 0.1% sodium azide. |
| Preservative: | Sodium azide |
| Precaution of Use: | This product contains sodium azide: a POISONOUS AND HAZARDOUS SUBSTANCE which should be handled by trained staff only. |
| Storage: | -20 °C |

Images



Immunohistochemistry

Image 1.



Immunohistochemistry

Image 2.