

Datasheet for ABIN925401

Bovine/Calf Plasma (Sterile In Sodium Citrate)[Go to Product page](#)**1** Image

Overview

Quantity:	50 mL
Host:	Cow
Application:	Cell Culture (CC)

Product Details

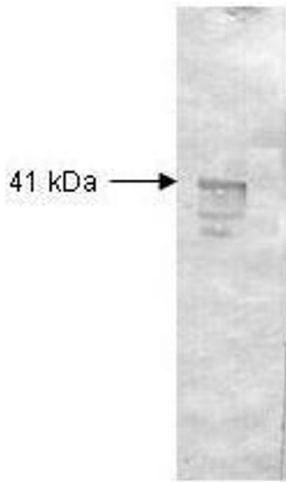
Characteristics:	Strain: Bovine/Calf - mixed Sex: Mixed
Purification:	Plasma
Sterility:	Sterile filtered

Application Details

Application Notes:	pH: normal Immunoelectrophoresis: normal Hemoglobin: normal IgG Concentration: normal
Restrictions:	For Research Use only

Handling

Format:	Liquid
Concentration:	75.0mg/ml
Buffer:	Sodium Citrate
Handling Advice:	Avoid cycles of freezing and thawing. Use aseptic technique to maintain sterility when opening product.
Storage:	-20 °C



Western Blotting

Image 1. Both the antiserum and IgG fractions of anti-Dextranase (Penicillium) are shown to detect under reducing conditions of SDS-PAGE the 41,000 dalton enzyme in cellular extracts. Approximately 10 ug of total protein is loaded per lane. A 1:2,000 dilution of the primary antibody is used followed by detection using HRP Goat-a-Rabbit IgG [H&L] diluted 1:4,000 and color development using 4-CN substrate until sufficient color develops. Other detection systems will yield similar results.