



Datasheet for ABIN925405

## Bovine/Calf Plasma (Sterile In Potassium EDTA)



[Go to Product page](#)

### 2 Images

#### Overview

Quantity:	50 mL
Host:	Cow
Application:	Cell Culture (CC)

#### Product Details

Characteristics:	Strain: Bovine/Calf - mixed Sex: Mixed
Purification:	Plasma
Sterility:	Sterile filtered

#### Application Details

Application Notes:	pH: normal Immunoelectrophoresis: normal Hemoglobin: normal IgG Concentration: normal
Restrictions:	For Research Use only

#### Handling

Format:	Liquid
Concentration:	76 mg/mL
Buffer:	Potassium EDTA
Handling Advice:	Avoid cycles of freezing and thawing. Use aseptic technique to maintain sterility when opening product.
Storage:	-20 °C

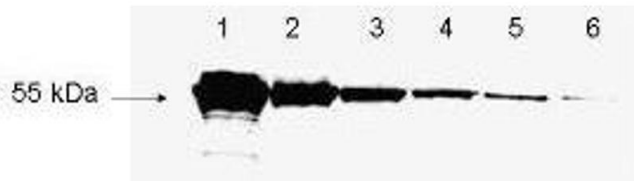
Handling

Expiry Date: 12 months

Images

### Western Blotting

Image 1.



### Western Blotting

Image 2.

