



[Go to Product page](#)

Datasheet for ABIN925595

Protein Molecular Weight Marker

2 Images

Overview

| | |
|--------------------------|---------------------------------------|
| Quantity: | 200 µL |
| Detection Range: | 14-120 kDa |
| Minimum Detection Limit: | 14 kDa |
| Application: | SDS-PAGE (SDS), Western Blotting (WB) |

Product Details

| | |
|-------------------|--|
| Purpose: | This protein molecular weight marker is a cocktail containing seven purified proteins that range in size from 14 to 120 kDa and thus span a molecular weight range common to most proteins and protein subunits. |
| Detection Method: | Colorimetric |
| Characteristics: | The protein mixture has been formulated to yield well-defined bands after SDS-polyacrylamide gel electrophoresis and staining with Coomassie blue or other common staining techniques. The intensity of the 67 kDa bovine albumin band has been increased to serve as a reference. The product is supplied in 1X loading buffer and is ready-to-use. |
| Sterility: | Sterile filtered |

Application Details

| | |
|--------------------|--|
| Application Notes: | This product is designed for use in accurate estimation of protein molecular weight in SDS-polyacrylamide gel electrophoresis and western blotting. Thaw the cocktail at room temperature. Gently invert vial several times to ensure that the solution is homogeneous and that any precipitated material is re-dissolved. A loading volume of 5-10µl is appropriate for most gel formats. These are unstained markers optimized for use with Coomassie blue staining, but |
|--------------------|--|

Application Details

the loading volume can be adjusted for compatibility with other staining methods (i.e. silver staining). 62.5 mM Tris-HCl, pH 6.8, 2% (w/v) SDS, 250 mM NaCl, 1mM EDTA, 4% (v/v) β -Mercaptoethanol, 35% (v/v) Glycerol and 0.05% (w/v) bromophenol blue

Comment: in 1x Loading Buffer

Restrictions: For Research Use only

Handling

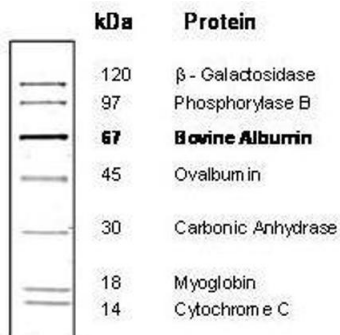
Format: Liquid

Preservative: Sodium azide

Precaution of Use: This product contains sodium azide: a POISONOUS AND HAZARDOUS SUBSTANCE which should be handled by trained staff only.

Storage: -20 °C

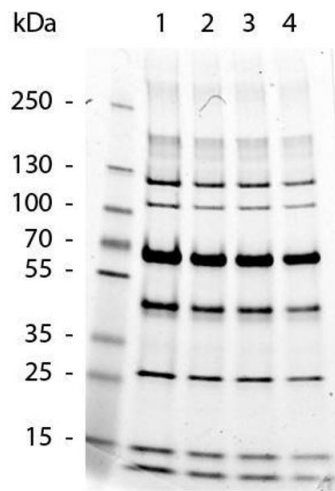
Images



4-20% Tris-Glycine SDS-PAGE
Stained with Coomassie Blue

Western Blotting

Image 1.



SDS-PAGE

Image 2. SDS-Page of Protein Molecular Weight Marker. Lane 1: Protein Molecular Weight Marker 12.5 uL. Lane 2: Protein Molecular Weight Marker 10.0 uL. Lane 3: Protein Molecular Weight Marker 7.5 uL. Lane 4: Protein Molecular Weight Marker 5.0 uL. Exact molecular weights are detailed on image 1.