

Datasheet for ABIN925763

**anti-RAD17 antibody (C-Term)**[Go to Product page](#)**1** Image

## Overview

Quantity:	100 µg
Target:	RAD17
Binding Specificity:	C-Term
Reactivity:	Human, Mouse, Rat, Dog, Cow
Host:	Rabbit
Clonality:	Polyclonal
Conjugate:	This RAD17 antibody is un-conjugated
Application:	Western Blotting (WB)

## Product Details

Immunogen:	RAD17 antibody was raised in rabbit using the C terminal of RAD17 as the immunogen
Cross-Reactivity:	Mouse (Murine), Rat (Rattus), Cow (Bovine), Dog (Canine)

## Target Details

Target:	RAD17
Alternative Name:	RAD17 ( <a href="#">RAD17 Products</a> )
Background:	RAD17 is highly similar to the gene product of Schizosaccharomyces pombe rad17, a cell cycle checkpoint gene required for cell cycle arrest and DNA damage repair in response to DNA damage. This protein shares strong similarity with DNA replication factor C (RFC), and can form a complex with RFCs. This protein binds to chromatin prior to DNA damage and is phosphorylated by ATR after the damage. This protein recruits the RAD1-RAD9-HUS1

## Target Details

checkpoint protein complex onto chromatin after DNA damage, which may be required for its phosphorylation. Synonyms: Polyclonal RAD17 antibody, Anti-RAD17 antibody, RAD17 homolog, S. pombe antibody, CCYC antibody, HRAD17 antibody, R24L antibody, RAD17Sp antibody, Rad24 antibody.

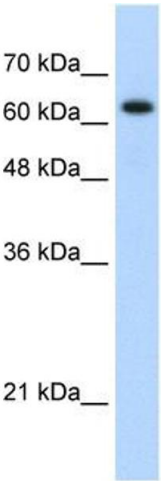
## Application Details

Application Notes:	WB: 1.25 µg/mL Optimal conditions should be determined by the investigator.
Comment:	RAD17 Blocking Peptide, catalog no. 33R-7392, is also available for use as a blocking control in assays to test for specificity of this RAD17 antibody
Restrictions:	For Research Use only

## Handling

Format:	Lyophilized
Concentration:	Lot specific
Buffer:	Lyophilized powder. Add 100 µL of distilled water. Final antibody concentration is 1 mg/mL in PBS buffer.
Handling Advice:	Avoid repeated freeze/thaw cycles.
Storage:	4 °C/-20 °C
Storage Comment:	Store at 4 °C, following reconstitution, aliquot and store at -20 °C.

## Images



### Western Blotting

**Image 1.** RAD17 antibody (20R-1062) used at 0.06 ug/ml to detect target protein.