

Datasheet for ABIN925767
anti-SUPT16H antibody (N-Term)



[Go to Product page](#)

1 Image

Overview

Quantity:	100 µg
Target:	SUPT16H
Binding Specificity:	N-Term
Reactivity:	Human, Mouse, Rat, Dog, Cow, Zebrafish (Danio rerio), Xenopus laevis
Host:	Rabbit
Clonality:	Polyclonal
Conjugate:	This SUPT16H antibody is un-conjugated
Application:	Western Blotting (WB)

Product Details

Immunogen:	SUPT16 H antibody was raised in rabbit using the N terminal of SUPT16 as the immunogen
Cross-Reactivity:	Dog (Canine), Mouse (Murine), Rat (Rattus), Zebrafish (Brachydanio rerio), Frog, Cow (Bovine)

Target Details

Target:	SUPT16H
Alternative Name:	SUPT16H (SUPT16H Products)
Background:	Transcription of protein-coding genes can be reconstituted on naked DNA with only the general transcription factors and RNA polymerase II. However, this minimal system cannot transcribe DNA packaged into chromatin, indicating that accessory factors may facilitate access to DNA. One such factor, FACT (facilitates chromatin transcription), interacts specifically with histones H2A/H2B to effect nucleosome disassembly and transcription elongation. FACT is composed

Target Details

of an 80 kDa subunit and a 140 kDa subunit, the latter of which is SUPT16H. Synonyms: Polyclonal SUPT16H antibody, Anti-SUPT16H antibody, suppressor of Ty 16 homolog, *S. cerevisiae* antibody, CDC68 antibody, FACT antibody, FACTP140 antibody, FLJ10857 antibody, FLJ14010 antibody, FLJ34357 antibody, SPT16/CDC68 antibody.

Pathways: [Chromatin Binding](#)

Application Details

Application Notes: WB: 1.25 µg/mL
Optimal conditions should be determined by the investigator.

Comment: SUPT16H Blocking Peptide, catalog no. 33R-1511, is also available for use as a blocking control in assays to test for specificity of this SUPT16H antibody

Restrictions: For Research Use only

Handling

Format: Lyophilized

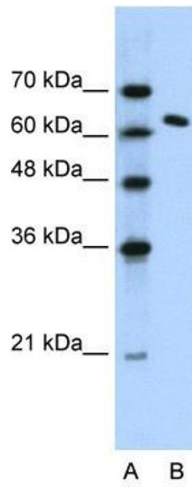
Concentration: Lot specific

Buffer: Lyophilized powder. Add 100 µL of distilled water. Final antibody concentration is 1 mg/mL in PBS buffer.

Handling Advice: Avoid repeated freeze/thaw cycles.

Storage: 4 °C/-20 °C

Storage Comment: Store at 4 °C, following reconstitution, aliquot and store at -20 °C.



Western Blotting

Image 1. SUPT16H antibody (20R-1066) used at 0.2-1 ug/ml to detect target protein.