

Datasheet for ABIN925779
anti-ZNF621 antibody (Middle Region)



[Go to Product page](#)

1 Image

Overview

Quantity:	100 µg
Target:	ZNF621
Binding Specificity:	Middle Region
Reactivity:	Human, Mouse, Rat, Cow, Dog
Host:	Rabbit
Clonality:	Polyclonal
Conjugate:	This ZNF621 antibody is un-conjugated
Application:	Western Blotting (WB)

Product Details

Immunogen:	ZNF621 antibody was raised in rabbit using the middle region of ZNF621 as the immunogen
Cross-Reactivity:	Dog (Canine), Mouse (Murine), Rat (Rattus), Cow (Bovine)

Target Details

Target:	ZNF621
Alternative Name:	ZNF621 (ZNF621 Products)
Background:	ZNF621 is a candidate transcription factor. Synonyms: Polyclonal ZNF621 antibody, Anti-ZNF621 antibody, zinc finger protein 621 antibody.

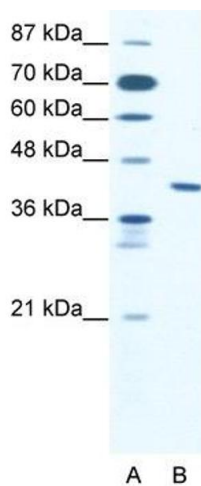
Application Details

Application Notes:	WB: 2.5 µg/mL Optimal conditions should be determined by the investigator.
Comment:	ZNF621 Blocking Peptide, catalog no. 33R-2295, is also available for use as a blocking control in assays to test for specificity of this ZNF621 antibody
Restrictions:	For Research Use only

Handling

Format:	Lyophilized
Concentration:	Lot specific
Buffer:	Lyophilized powder. Add 100 µL of distilled water. Final antibody concentration is 1 mg/mL in PBS buffer.
Handling Advice:	Avoid repeated freeze/thaw cycles.
Storage:	4 °C/-20 °C
Storage Comment:	Store at 4 °C, following reconstitution, aliquot and store at -20 °C.

Images



Western Blotting

Image 1. ZNF621 antibody (20R-1078) used at 0.2-1 µg/ml to detect target protein.