

Datasheet for ABIN925780  
**anti-SP140 antibody (N-Term)**



[Go to Product page](#)

3 Images

## Overview

Quantity:	100 µg
Target:	SP140
Binding Specificity:	N-Term
Reactivity:	Human, Rat, Dog, Mouse
Host:	Rabbit
Clonality:	Polyclonal
Conjugate:	This SP140 antibody is un-conjugated
Application:	Western Blotting (WB), Immunohistochemistry (IHC)

## Product Details

Immunogen:	SP140 antibody was raised in rabbit using the N terminal of SP140 as the immunogen
Cross-Reactivity:	Mouse (Murine), Rat (Rattus), Dog (Canine)

## Target Details

Target:	SP140
Alternative Name:	SP140 ( <a href="#">SP140 Products</a> )
Background:	SP140 is the nuclear body protein found specifically in all NP cells. HIV-1 infection induced its partial dispersal from nuclear bodies into cytosolic colocalization with Vif. Synonyms: Polyclonal SP140 antibody, Anti-SP140 antibody, SP140 nuclear body protein antibody.

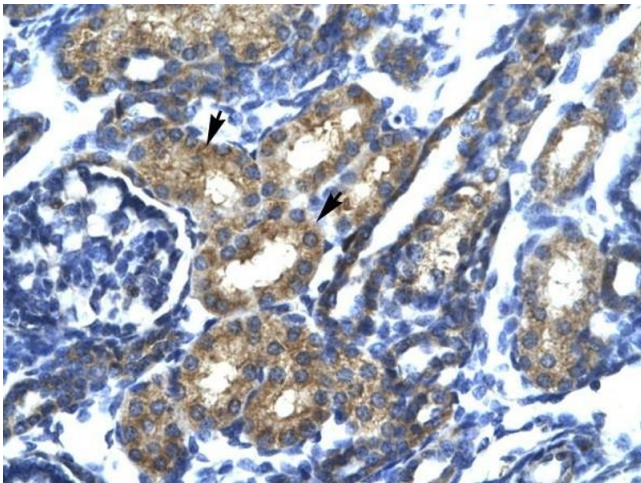
## Application Details

Application Notes:	Optimal conditions should be determined by the investigator.
Comment:	SP140 Blocking Peptide, catalog no. 33R-7054, is also available for use as a blocking control in assays to test for specificity of this SP140 antibody
Restrictions:	For Research Use only

## Handling

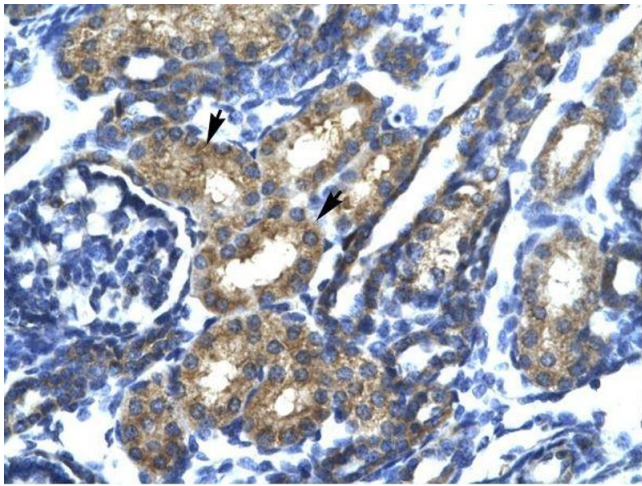
Format:	Lyophilized
Concentration:	Lot specific
Buffer:	Lyophilized powder. Add 100 $\mu$ L of distilled water. Final antibody concentration is 1 mg/mL in PBS buffer.
Handling Advice:	Avoid repeated freeze/thaw cycles.
Storage:	4 °C/-20 °C
Storage Comment:	Store at 4 °C, following reconstitution, aliquot and store at -20 °C.

## Images



### Immunohistochemistry

**Image 1.** SP140 antibody was used for immunohistochemistry at a concentration of 4-8  $\mu$ g/ml to stain Epithelial cells of renal tubule (arrows) in Human Kidney. Magnification is at 400X



### Immunohistochemistry

**Image 2.** SP140 antibody was used for immunohistochemistry at a concentration of 4-8 ug/ml. Magnification is at 400X



### Western Blotting

**Image 3.** Western Blot showing SP140 antibody used at a concentration of 5.0 ug/ml against Raji Cell Lysate