

Datasheet for ABIN925786 **anti-SIAH1 antibody (N-Term)**



[Go to Product page](#)

1 Image

Overview

Quantity:	100 µg
Target:	SIAH1
Binding Specificity:	N-Term
Reactivity:	Human, Rat, Mouse, Dog, Cow, Zebrafish (Danio rerio), Xenopus laevis
Host:	Rabbit
Clonality:	Polyclonal
Conjugate:	This SIAH1 antibody is un-conjugated
Application:	Western Blotting (WB)

Product Details

Immunogen:	SIAH1 antibody was raised in rabbit using the N terminal of SIAH1 as the immunogen
Cross-Reactivity:	Mouse (Murine), Rat (Rattus), Dog (Canine), Cow (Bovine), Frog, Zebrafish (Brachydanio rerio)

Target Details

Target:	SIAH1
Alternative Name:	SIAH1 (SIAH1 Products)
Background:	SIAH1 is a protein that is a member of the seven in absentia homolog (SIAH) family. The protein is an E3 ligase and is involved in ubiquitination and proteasome-mediated degradation of specific proteins. The activity of this ubiquitin ligase has been implicated in the development of certain forms of Parkinson's disease, the regulation of the cellular response to hypoxia and induction of apoptosis. Alternative splicing results in several additional transcript variants,

Target Details

some encoding different isoforms and others that have not been fully characterized. Synonyms: Polyclonal SIAH1 antibody, Anti-SIAH1 antibody, seven in absentia homolog 1, Drosophila antibody.

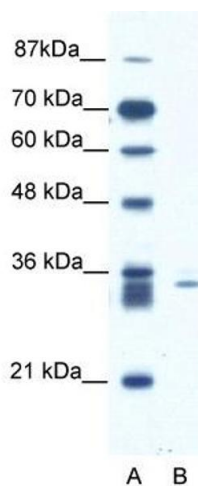
Application Details

Application Notes:	WB: 1.25 µg/mL Optimal conditions should be determined by the investigator.
Comment:	SIAH1 Blocking Peptide, catalog no. 33R-3086, is also available for use as a blocking control in assays to test for specificity of this SIAH1 antibody
Restrictions:	For Research Use only

Handling

Format:	Lyophilized
Concentration:	Lot specific
Buffer:	Lyophilized powder. Add 100 µL of distilled water. Final antibody concentration is 1 mg/mL in PBS buffer.
Handling Advice:	Avoid repeated freeze/thaw cycles.
Storage:	4 °C/-20 °C
Storage Comment:	Store at 4 °C, following reconstitution, aliquot and store at -20 °C.

Images



Western Blotting

Image 1. SIAH1 antibody (20R-1085) used at 0.2-1 ug/ml to detect target protein.