

Datasheet for ABIN925787
anti-Afadin antibody (N-Term)



[Go to Product page](#)

1 Image

Overview

| | |
|----------------------|---|
| Quantity: | 100 µg |
| Target: | Afadin (MLLT4) |
| Binding Specificity: | N-Term |
| Reactivity: | Human, Rat, Mouse, Chicken, Drosophila melanogaster |
| Host: | Rabbit |
| Clonality: | Polyclonal |
| Conjugate: | This Afadin antibody is un-conjugated |
| Application: | Western Blotting (WB) |

Product Details

| | |
|-------------------|--|
| Immunogen: | MLLT4 antibody was raised in rabbit using the N terminal of MLLT4 as the immunogen |
| Cross-Reactivity: | Rat (Rattus), Mouse (Murine), Chicken, Fruit Fly (Drosophila melanogaster) |

Target Details

| | |
|-------------------|--|
| Target: | Afadin (MLLT4) |
| Alternative Name: | MLLT4 (MLLT4 Products) |
| Background: | AF6 is a Ras target that regulates cell-cell adhesions downstream of Ras activation. It is fused with MLL in leukemias caused by t(6,11) translocations. Synonyms: Polyclonal MLLT4 antibody, Anti-MLLT4 antibody, myeloid/lymphoid or mixed-lineage leukemia, translocated to, 4 antibody, RP3-470B24.4 antibody, AF-6 antibody, AF6 antibody, AFADIN antibody, FLJ34371 antibody, RP3-431P23.3 antibody. |

Target Details

Pathways: [Cell-Cell Junction Organization](#)

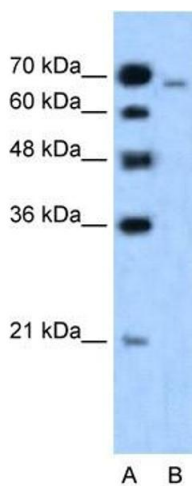
Application Details

| | |
|--------------------|--|
| Application Notes: | WB: 1.25 µg/mL Optimal conditions should be determined by the investigator. |
| Comment: | MLLT4 Blocking Peptide, catalog no. 33R-3641, is also available for use as a blocking control in assays to test for specificity of this MLLT4 antibody |
| Restrictions: | For Research Use only |

Handling

| | |
|------------------|---|
| Format: | Lyophilized |
| Concentration: | Lot specific |
| Buffer: | Lyophilized powder. Add 100 µL of distilled water. Final antibody concentration is 1 mg/mL in PBS buffer. |
| Handling Advice: | Avoid repeated freeze/thaw cycles. |
| Storage: | 4 °C/-20 °C |
| Storage Comment: | Store at 4 °C, following reconstitution, aliquot and store at -20 °C. |

Images



Western Blotting

Image 1. Western Blot showing MLLT4 antibody used at a concentration of 1-2 ug/ml to detect its target protein.