

Datasheet for ABIN925791 **anti-HLTF antibody (N-Term)**



[Go to Product page](#)

1 Image

Overview

Quantity:	100 µg
Target:	HLTF
Binding Specificity:	N-Term
Reactivity:	Human, Mouse, Rat, Dog, Cow, Rabbit
Host:	Rabbit
Clonality:	Polyclonal
Conjugate:	This HLTF antibody is un-conjugated
Application:	Western Blotting (WB)

Product Details

Immunogen:	SMARCA3 antibody was raised in rabbit using the N terminal of SMARCA3 as the immunogen
Cross-Reactivity:	Mouse (Murine), Rat (Rattus), Dog (Canine), Cow (Bovine), Rabbit

Target Details

Target:	HLTF
Alternative Name:	SMARCA3 (HLTF Products)
Background:	SMARCA3 (HLTF) is a member of the SWI/SNF family. Members of this family have helicase and ATPase activities and are thought to regulate transcription of certain genes by altering the chromatin structure around those genes. SMARCA3 contains a RING finger DNA binding motif. Western blots using two different antibodies against two unique regions of this protein target confirm the same apparent molecular weight in our tests. Synonyms: Polyclonal SMARCA3

Target Details

antibody, Anti-SMARCA3 antibody.

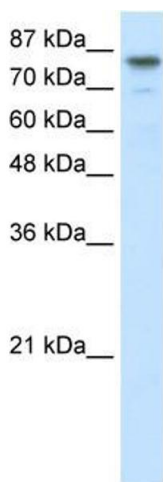
Application Details

Application Notes:	WB: 2.5 µg/mL Optimal conditions should be determined by the investigator.
Comment:	SMARCA3 Blocking Peptide, catalog no. 33R-2121, is also available for use as a blocking control in assays to test for specificity of this SMARCA3 antibody
Restrictions:	For Research Use only

Handling

Format:	Lyophilized
Concentration:	Lot specific
Buffer:	Lyophilized powder. Add 100 µL of distilled water. Final antibody concentration is 1 mg/mL in PBS buffer.
Handling Advice:	Avoid repeated freeze/thaw cycles.
Storage:	4 °C/-20 °C
Storage Comment:	Store at 4 °C, following reconstitution, aliquot and store at -20 °C.

Images



Western Blotting

Image 1. SMARCA3 antibody (20R-1090) used at 0.2-1 µg/ml to detect target protein.