

Datasheet for ABIN925793
anti-KLHL14 antibody (N-Term)



[Go to Product page](#)

1 Image

Overview

Quantity:	100 µg
Target:	KLHL14
Binding Specificity:	N-Term
Reactivity:	Human, Rat, Mouse, Cow, Dog, Chicken
Host:	Rabbit
Clonality:	Polyclonal
Conjugate:	This KLHL14 antibody is un-conjugated
Application:	Western Blotting (WB), Immunohistochemistry (IHC)

Product Details

Immunogen:	KLHL14 antibody was raised in rabbit using the N terminal of KLHL14 as the immunogen
Cross-Reactivity:	Mouse (Murine), Rat (Rattus), Dog (Canine), Cow (Bovine), Chicken

Target Details

Target:	KLHL14
Alternative Name:	KLHL14 (KLHL14 Products)
Background:	KLHL14 is a member of the KLHL family. Synonyms: Polyclonal KLHL14 antibody, Anti-KLHL14 antibody, kelch-like 14, Drosophila antibody.

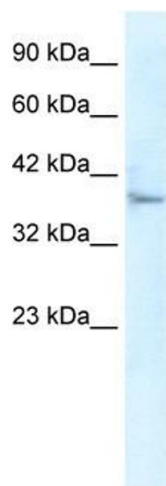
Application Details

Application Notes:	WB: 5 µg/mL Optimal conditions should be determined by the investigator.
Comment:	KLHL14 Blocking Peptide, catalog no. 33R-6491, is also available for use as a blocking control in assays to test for specificity of this KLHL14 antibody
Restrictions:	For Research Use only

Handling

Format:	Lyophilized
Concentration:	Lot specific
Buffer:	Lyophilized powder. Add 100 µL of distilled water. Final antibody concentration is 1 mg/mL in PBS buffer.
Handling Advice:	Avoid repeated freeze/thaw cycles.
Storage:	4 °C/-20 °C
Storage Comment:	Store at 4 °C, following reconstitution, aliquot and store at -20 °C.

Images



Western Blotting

Image 1. Western Blot showing KLHL14 antibody used at a concentration of 1-2 µg/ml to detect its target protein.