

Datasheet for ABIN925794
anti-ZMYND11 antibody (Middle Region)



[Go to Product page](#)

2 Images

Overview

Quantity:	100 µg
Target:	ZMYND11
Binding Specificity:	Middle Region
Reactivity:	Human, Mouse, Rat, Dog, Cow, Chicken
Host:	Rabbit
Clonality:	Polyclonal
Conjugate:	This ZMYND11 antibody is un-conjugated
Application:	Immunohistochemistry (IHC), Western Blotting (WB)

Product Details

Immunogen:	ZMYND11 antibody was raised in rabbit using the middle region of ZMYND11 as the immunogen
Cross-Reactivity:	Mouse (Murine), Rat (Rattus), Dog (Canine), Cow (Bovine), Chicken

Target Details

Target:	ZMYND11
Alternative Name:	ZMYND11 (ZMYND11 Products)
Background:	ZMYND11 was first identified by its ability to bind the adenovirus E1A protein. The protein localizes to the nucleus. It functions as a transcriptional repressor, and expression of E1A inhibits this repression. Synonyms: Polyclonal ZMYND11 antibody, Anti-ZMYND11 antibody, zinc finger, MYND domain containing 11 antibody, BRAM1 antibody, BS69 antibody,

Target Details

MGC111056 antibody, RP11-486H9.1 antibody.

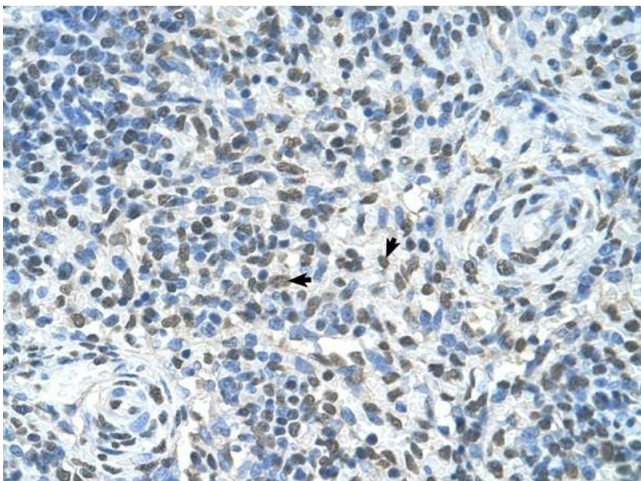
Application Details

Application Notes:	WB: 2.5 µg/mL Optimal conditions should be determined by the investigator.
Comment:	ZMYND11 Blocking Peptide, catalog no. 33R-8638, is also available for use as a blocking control in assays to test for specificity of this ZMYND11 antibody
Restrictions:	For Research Use only

Handling

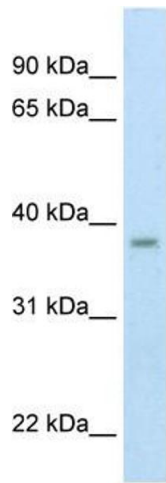
Format:	Lyophilized
Concentration:	Lot specific
Buffer:	Lyophilized powder. Add 100 µL of distilled water. Final antibody concentration is 1 mg/mL in PBS buffer.
Handling Advice:	Avoid repeated freeze/thaw cycles.
Storage:	4 °C/-20 °C
Storage Comment:	Store at 4 °C, following reconstitution, aliquot and store at -20 °C.

Images



Immunohistochemistry

Image 1. ZMYND11 antibody was used for immunohistochemistry at a concentration of 4-8 ug/ml to stain Spleen cells (arrows) in Human Spleen. Magnification is at 400X



Western Blotting

Image 2. Western Blot showing ZMYND11 antibody used at a concentration of 1-2 ug/ml to detect its target protein.