

Datasheet for ABIN925796  
**anti-CBX3 antibody (Middle Region)**



[Go to Product page](#)

2 Images

## Overview

Quantity:	100 µg
Target:	CBX3
Binding Specificity:	Middle Region
Reactivity:	Human, Mouse, Rat, Dog, Cow, Chicken, Xenopus laevis, Drosophila melanogaster
Host:	Rabbit
Clonality:	Polyclonal
Conjugate:	This CBX3 antibody is un-conjugated
Application:	Western Blotting (WB), Immunohistochemistry (IHC)

## Product Details

Immunogen:	CBX3 antibody was raised in rabbit using the middle region of CBX3 as the immunogen
Cross-Reactivity:	Mouse (Murine), Rat (Rattus), Dog (Canine), Chicken, Cow (Bovine), Fruit Fly (Drosophila melanogaster), Frog

## Target Details

Target:	CBX3
Alternative Name:	CBX3 ( <a href="#">CBX3 Products</a> )
Background:	At the nuclear envelope, the nuclear lamina and heterochromatin are adjacent to the inner nuclear membrane. CBX3 binds DNA and is a component of heterochromatin. CBX3 also can bind lamin B receptor, an integral membrane protein found in the inner nuclear membrane. The dual binding functions of CBX3 may explain the association of heterochromatin with the inner

## Target Details

nuclear membrane. Synonyms: Polyclonal CBX3 antibody, Anti-CBX3 antibody, chromobox homolog 3, HP1 gamma homolog, Drosophila antibody, HECH antibody, HP1-GAMMA antibody, HP1Hs-gamma antibody.

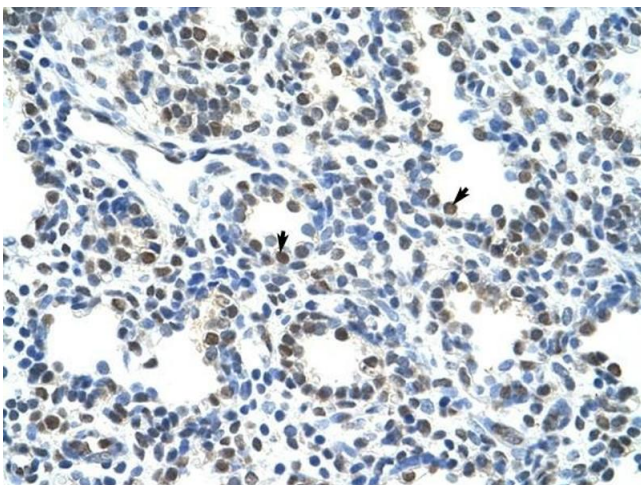
## Application Details

Application Notes:	WB: 1.25 µg/mL Optimal conditions should be determined by the investigator.
Comment:	CBX3 Blocking Peptide, catalog no. 33R-2551, is also available for use as a blocking control in assays to test for specificity of this CBX3 antibody
Restrictions:	For Research Use only

## Handling

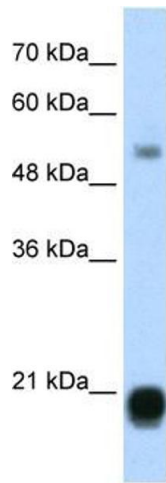
Format:	Lyophilized
Concentration:	Lot specific
Buffer:	Lyophilized powder. Add 100 µL of distilled water. Final antibody concentration is 1 mg/mL in PBS buffer.
Handling Advice:	Avoid repeated freeze/thaw cycles.
Storage:	4 °C/-20 °C
Storage Comment:	Store at 4 °C, following reconstitution, aliquot and store at -20 °C.

## Images



### Immunohistochemistry

**Image 1.** CBX3 antibody was used for immunohistochemistry at a concentration of 4-8 µg/ml to stain Alveolar cells (arrows) in Human Lung. Magnification is at 400X



### Western Blotting

**Image 2.** CBX3 antibody (20R-1095) used at 0.2-1 ug/ml to detect target protein.