

Datasheet for ABIN925797

anti-KEAP1 antibody (C-Term)

2 Images



[Go to Product page](#)

Overview

Quantity:	100 µg
Target:	KEAP1
Binding Specificity:	C-Term
Reactivity:	Human, Mouse, Rat, Pig, Cow, Dog, Zebrafish (Danio rerio), Xenopus laevis
Host:	Rabbit
Clonality:	Polyclonal
Conjugate:	This KEAP1 antibody is un-conjugated
Application:	Western Blotting (WB), Immunohistochemistry (IHC)

Product Details

Immunogen:	KEAP1 antibody was raised in rabbit using the C terminal of KEAP1 as the immunogen
Cross-Reactivity:	Mouse (Murine), Rat (Rattus), Dog (Canine), Cow (Bovine), Pig (Porcine), Zebrafish (Brachydanio rerio), Frog

Target Details

Target:	KEAP1
Alternative Name:	KEAP1 (KEAP1 Products)
Background:	KEAP1 contains KELCH-1 like domains, as well as a BTB/POZ domain. Kelch-like ECH-associated protein 1 interacts with NF-E2-related factor 2 in a redox-sensitive manner and the dissociation of the proteins in the cytoplasm is followed by transportation of NF-E2-related factor 2 to the nucleus. This interaction results in the expression of the catalytic subunit of

Target Details

gamma-glutamylcysteine synthetase. Synonyms: Polyclonal KEAP1 antibody, Anti-KEAP1 antibody, kelch-like ECH-associated protein 1 antibody, INrf2 antibody, KIAA0132 antibody, KLHL19 antibody, MGC10630 antibody, MGC1114 antibody, MGC20887 antibody, MGC4407 antibody, MGC9454 antibody.

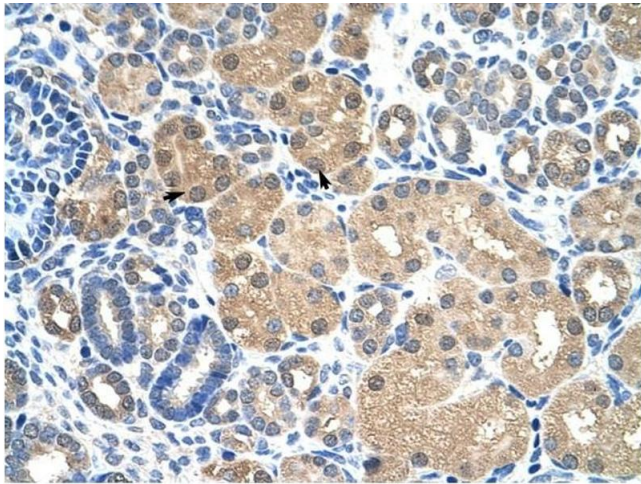
Pathways: [Maintenance of Protein Location](#)

Application Details

Application Notes:	WB: 1 µg/mL Optimal conditions should be determined by the investigator.
Comment:	KEAP1 Blocking Peptide, catalog no. 33R-9382, is also available for use as a blocking control in assays to test for specificity of this KEAP1 antibody
Restrictions:	For Research Use only

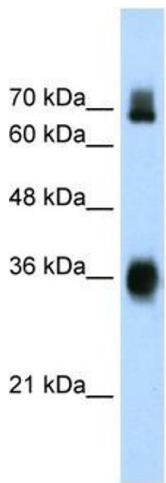
Handling

Format:	Lyophilized
Concentration:	Lot specific
Buffer:	Lyophilized powder. Add 100 µL of distilled water. Final antibody concentration is 1 mg/mL in PBS buffer.
Handling Advice:	Avoid repeated freeze/thaw cycles.
Storage:	4 °C/-20 °C
Storage Comment:	Store at 4 °C, following reconstitution, aliquot and store at -20 °C.



Immunohistochemistry

Image 1. KEAP1 antibody was used for immunohistochemistry at a concentration of 4-8 ug/ml to stain Epithelial cells of renal tubule (arrows) in Human Kidney. Magnification is at 400X



Western Blotting

Image 2. Western Blot showing KEAP1 antibody used at a concentration of 1-2 ug/ml to detect its target protein.