

Datasheet for ABIN925801
anti-Cyclin B3 antibody (N-Term)



[Go to Product page](#)

1 Image

Overview

Quantity:	100 µg
Target:	Cyclin B3 (CCNB3)
Binding Specificity:	N-Term
Reactivity:	Human
Host:	Rabbit
Clonality:	Polyclonal
Conjugate:	This Cyclin B3 antibody is un-conjugated
Application:	Western Blotting (WB)

Product Details

Immunogen:	CCNB3 antibody was raised in rabbit using the N terminal of CCNB3 as the immunogen
------------	--

Target Details

Target:	Cyclin B3 (CCNB3)
Alternative Name:	CCNB3 (CCNB3 Products)
Background:	CCNB3 belongs to the highly conserved cyclin family, whose members are characterized by a dramatic periodicity in protein abundance through the cell cycle. Cyclins function as regulators of CDK kinases. Different cyclins exhibit distinct expression and degradation patterns which contribute to the temporal coordination of each mitotic event. This cyclin may associate with CDC2 and CDK2 kinases, and be required for proper spindle reorganization and restoration of the interphase nucleus. Synonyms: Polyclonal CCNB3 antibody, Anti-CCNB3 antibody, cyclin B3

Target Details

antibody.

Pathways: [Cell Division Cycle, Chromatin Binding](#)

Application Details

Application Notes: WB: 2.5 µg/mL

Optimal conditions should be determined by the investigator.

Comment: CCNB3 Blocking Peptide, catalog no. 33R-6192, is also available for use as a blocking control in assays to test for specificity of this CCNB3 antibody

Restrictions: For Research Use only

Handling

Format: Lyophilized

Concentration: Lot specific

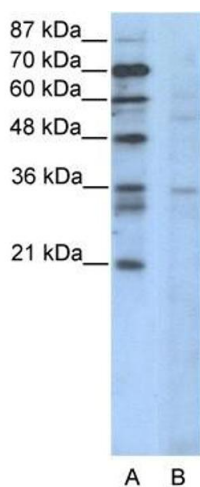
Buffer: Lyophilized powder. Add 100 µL of distilled water. Final antibody concentration is 1 mg/mL in PBS buffer.

Handling Advice: Avoid repeated freeze/thaw cycles.

Storage: 4 °C/-20 °C

Storage Comment: Store at 4 °C, following reconstitution, aliquot and store at -20 °C.

Images



Western Blotting

Image 1. CCNB3 antibody (20R-1100) used at 0.2-1 µg/ml to detect target protein.