

## Datasheet for ABIN925813 **anti-FERD3L antibody (N-Term)**

### 2 Images



[Go to Product page](#)

### Overview

Quantity:	100 µg
Target:	FERD3L
Binding Specificity:	N-Term
Reactivity:	Human
Host:	Rabbit
Clonality:	Polyclonal
Conjugate:	This FERD3L antibody is un-conjugated
Application:	Immunohistochemistry (IHC), Western Blotting (WB)

### Product Details

Immunogen:	FERD3 L antibody was raised in rabbit using the N terminal of FERD3 as the immunogen
------------	--

### Target Details

Target:	FERD3L
Alternative Name:	FERD3L ( <a href="#">FERD3L Products</a> )
Background:	FERD3L is an evolutionarily conserved bHLH transcription factor that is identified in fly, mouse and man. Nervous system expression of this protein is detected in fly and mouse. Synonyms: Polyclonal FERD3L antibody, Anti-FERD3L antibody, Fer3-like, Drosophila antibody.

### Application Details

Application Notes:	WB: 1 µg/mL
--------------------	-------------

## Application Details

Optimal conditions should be determined by the investigator.

Comment: FERD3L Blocking Peptide, catalog no. 33R-8344, is also available for use as a blocking control in assays to test for specificity of this FERD3L antibody

Restrictions: For Research Use only

## Handling

Format: Lyophilized

Concentration: Lot specific

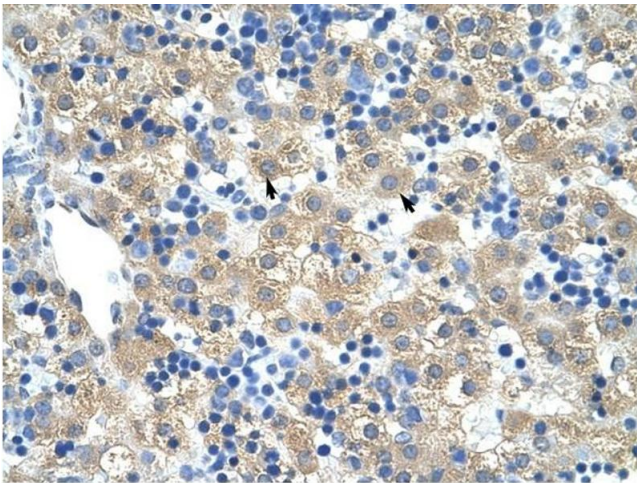
Buffer: Lyophilized powder. Add 100  $\mu$ L of distilled water. Final antibody concentration is 1 mg/mL in PBS buffer.

Handling Advice: Avoid repeated freeze/thaw cycles.

Storage: 4 °C/-20 °C

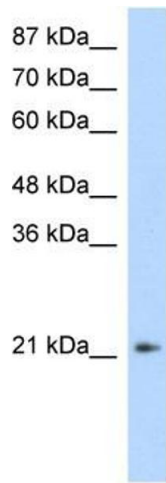
Storage Comment: Store at 4 °C, following reconstitution, aliquot and store at -20 °C.

## Images



### Immunohistochemistry

**Image 1.** FERD3L antibody was used for immunohistochemistry at a concentration of 4-8  $\mu$ g/ml to stain Hepatocytes (arrows) in Human Liver. Magnification is at 400X



### Western Blotting

**Image 2.** FERD3L antibody (20R-1112) used at 0.2-1 ug/ml to detect target protein.