

Datasheet for ABIN925816
anti-HMG1L10 antibody (C-Term)



[Go to Product page](#)

1 Image

Overview

Quantity:	100 µg
Target:	HMG1L10
Binding Specificity:	C-Term
Reactivity:	Human, Rat, Dog, Mouse, Rabbit, Cow, Pig
Host:	Rabbit
Clonality:	Polyclonal
Conjugate:	This HMG1L10 antibody is un-conjugated
Application:	Western Blotting (WB)

Product Details

Immunogen:	HMG1 L10 antibody was raised in rabbit using the C terminal of HMG1 10 as the immunogen
Cross-Reactivity:	Mouse (Murine), Rat (Rattus), Dog (Canine), Pig (Porcine), Cow (Bovine), Rabbit

Target Details

Target:	HMG1L10
Alternative Name:	HMG1L10 (HMG1L10 Products)
Background:	HMG1L10 contains 2 HMG box DNA-binding domains and belongs to the HMGB family. It binds preferentially single-stranded DNA and unwinds double stranded DNA. Synonyms: Polyclonal HMG1L10 antibody, Anti-HMG1L10 antibody, high-mobility group, nonhistone chromosomal protein 1-like 10 antibody.

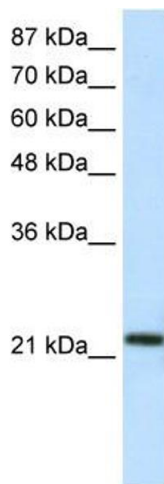
Application Details

Application Notes:	WB: 1.25 µg/mL Optimal conditions should be determined by the investigator.
Comment:	HMG1L10 Blocking Peptide, catalog no. 33R-10085, is also available for use as a blocking control in assays to test for specificity of this HMG1L10 antibody
Restrictions:	For Research Use only

Handling

Format:	Lyophilized
Concentration:	Lot specific
Buffer:	Lyophilized powder. Add 100 µL of distilled water. Final antibody concentration is 1 mg/mL in PBS buffer.
Handling Advice:	Avoid repeated freeze/thaw cycles.
Storage:	4 °C/-20 °C
Storage Comment:	Store at 4 °C, following reconstitution, aliquot and store at -20 °C.

Images



Western Blotting

Image 1. HMG1L10 antibody (20R-1115) used at 0.2-1 µg/ml to detect target protein.