

Datasheet for ABIN925817
anti-ZNF683 antibody (N-Term)



[Go to Product page](#)

2 Images

Overview

| | |
|----------------------|---|
| Quantity: | 100 µg |
| Target: | ZNF683 |
| Binding Specificity: | N-Term |
| Reactivity: | Human |
| Host: | Rabbit |
| Clonality: | Polyclonal |
| Conjugate: | This ZNF683 antibody is un-conjugated |
| Application: | Western Blotting (WB), Immunohistochemistry (IHC) |

Product Details

Immunogen: ZNF683 antibody was raised in rabbit using the N terminal of ZNF683 as the immunogen

Target Details

| | |
|-------------------|---|
| Target: | ZNF683 |
| Alternative Name: | ZNF683 (ZNF683 Products) |
| Background: | This gene, ZNF683, which is located on chromosome 1, is predicted to encode a zinc finger protein, currently with unknown function. Synonyms: Polyclonal ZNF683 antibody, Anti-ZNF683 antibody, zinc finger protein 683 antibody. |

Application Details

Application Notes: WB: 1.25 µg/mL

Application Details

Optimal conditions should be determined by the investigator.

Comment: ZNF683 Blocking Peptide, catalog no. 33R-6972, is also available for use as a blocking control in assays to test for specificity of this ZNF683 antibody

Restrictions: For Research Use only

Handling

Format: Lyophilized

Concentration: Lot specific

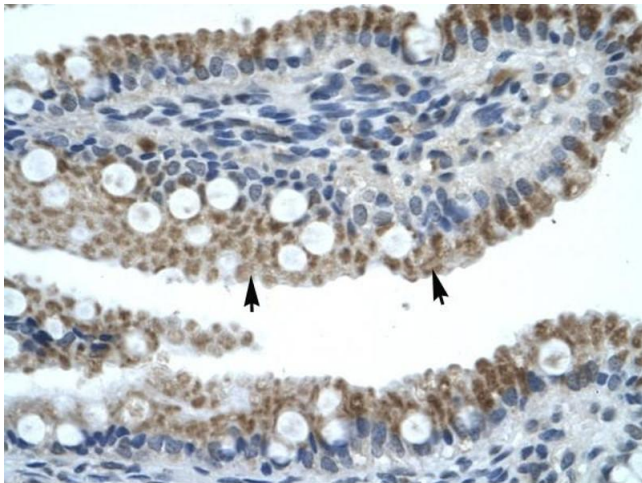
Buffer: Lyophilized powder. Add 100 μ L of distilled water. Final antibody concentration is 1 mg/mL in PBS buffer.

Handling Advice: Avoid repeated freeze/thaw cycles.

Storage: 4 °C/-20 °C

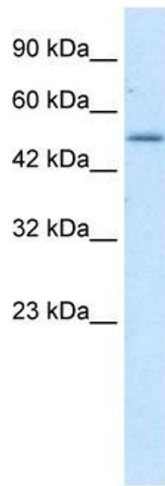
Storage Comment: Store at 4 °C, following reconstitution, aliquot and store at -20 °C.

Images



Immunohistochemistry

Image 1. ZNF683 antibody was used for immunohistochemistry at a concentration of 4-8 μ g/ml to stain Epithelial cells of intestinal villus (arrows) in Human Intestine. Magnification is at 400X



Western Blotting

Image 2. Western Blot showing ZNF683 antibody used at a concentration of 1-2 ug/ml to detect its target protein.