

Datasheet for ABIN925818
anti-ZNF660 antibody (C-Term)



[Go to Product page](#)

2 Images

Overview

Quantity:	100 µg
Target:	ZNF660
Binding Specificity:	C-Term
Reactivity:	Human, Rat, Dog, Mouse
Host:	Rabbit
Clonality:	Polyclonal
Conjugate:	This ZNF660 antibody is un-conjugated
Application:	Western Blotting (WB), Immunohistochemistry (IHC)

Product Details

Immunogen:	ZNF660 antibody was raised in rabbit using the C terminal of ZNF660 as the immunogen
Cross-Reactivity:	Mouse (Murine), Rat (Rattus), Dog (Canine)

Target Details

Target:	ZNF660
Alternative Name:	ZNF660 (ZNF660 Products)
Background:	Located on chromosome 3, the ZNF660 gene encodes for zinc finger protein 660. Synonyms: Polyclonal ZNF660 antibody, Anti-ZNF660 antibody, zinc finger protein 660 antibody.

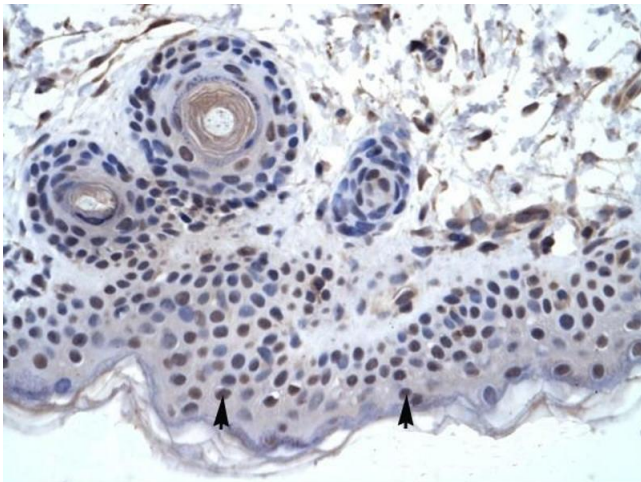
Application Details

Application Notes:	WB: 1.25 µg/mL Optimal conditions should be determined by the investigator.
Comment:	ZNF660 Blocking Peptide, catalog no. 33R-9075, is also available for use as a blocking control in assays to test for specificity of this ZNF660 antibody
Restrictions:	For Research Use only

Handling

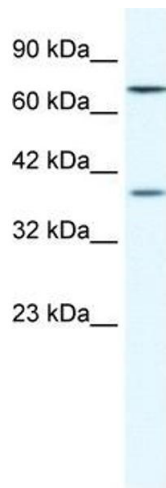
Format:	Lyophilized
Concentration:	Lot specific
Buffer:	Lyophilized powder. Add 100 µL of distilled water. Final antibody concentration is 1 mg/mL in PBS buffer.
Handling Advice:	Avoid repeated freeze/thaw cycles.
Storage:	4 °C/-20 °C
Storage Comment:	Store at 4 °C, following reconstitution, aliquot and store at -20 °C.

Images



Immunohistochemistry

Image 1. ZNF660 antibody was used for immunohistochemistry at a concentration of 4-8 ug/ml to stain Squamous epithelial cells (arrows) in Human Skin. Magnification is at 400X



Western Blotting

Image 2. Western Blot showing ZNF660 antibody used at a concentration of 1-2 ug/ml to detect its target protein.