

Datasheet for ABIN925827 **anti-Mesp2 antibody (C-Term)**



[Go to Product page](#)

1 Image

Overview

Quantity:	100 µg
Target:	Mesp2
Binding Specificity:	C-Term
Reactivity:	Mouse, Rat
Host:	Rabbit
Clonality:	Polyclonal
Conjugate:	This Mesp2 antibody is un-conjugated
Application:	Western Blotting (WB)

Product Details

Immunogen:	MESP2 antibody was raised in rabbit using the C terminal of MESP2 as the immunogen
Cross-Reactivity:	Rat (Rattus)

Target Details

Target:	Mesp2
Alternative Name:	MESP2 (Mesp2 Products)
Background:	Somite boundaries formed during embryogenesis, at the interface between Notch1-activated and -repressed domains. Genetic and biochemical studies indicate that this interface is generated by suppression of Notch activity by mesoderm posterior 2 (Mesp2) through induction of the lunatic fringe gene (Lfng). It is proposed that the oscillation of Notch activity is arrested and translated in the wavefront by Mesp2. Synonyms: Polyclonal MESP2 antibody,

Target Details

Anti-MESP2 antibody.

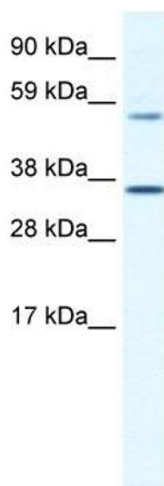
Application Details

Application Notes:	WB: 1.25 µg/mL Optimal conditions should be determined by the investigator.
Comment:	MESP2 Blocking Peptide, catalog no. 33R-8337, is also available for use as a blocking control in assays to test for specificity of this MESP2 antibody
Restrictions:	For Research Use only

Handling

Format:	Lyophilized
Concentration:	Lot specific
Buffer:	Lyophilized powder. Add 100 µL of distilled water. Final antibody concentration is 1 mg/mL in PBS buffer.
Handling Advice:	Avoid repeated freeze/thaw cycles.
Storage:	4 °C/-20 °C
Storage Comment:	Store at 4 °C, following reconstitution, aliquot and store at -20 °C.

Images



Western Blotting

Image 1. MESP2 antibody (20R-1126) used at 0.2-1 µg/ml to detect target protein.