

Datasheet for ABIN925831

**anti-Protein Tob1 (TOB1) (Middle Region) antibody**[Go to Product page](#)**1** Image

## Overview

Quantity:	100 µg
Target:	Protein Tob1 (TOB1)
Binding Specificity:	Middle Region
Reactivity:	Human, Mouse, Rat, Cow, Dog, Pig, Chicken
Host:	Rabbit
Clonality:	Polyclonal
Conjugate:	Un-conjugated
Application:	Western Blotting (WB)

## Product Details

Immunogen:	TOB1 antibody was raised in rabbit using the middle region of TOB1 as the immunogen
Cross-Reactivity:	Rat (Rattus), Cow (Bovine), Pig (Porcine), Dog (Canine), Human, Chicken

## Target Details

Target:	Protein Tob1 (TOB1)
Alternative Name:	TOB1 ( <a href="#">TOB1 Products</a> )
Background:	Tob1 is a member of antiproliferative family proteins and acts as a bone morphogenic protein inhibitor as well as a suppressor of proliferation in T cells, which have been implicated in postmenopausal bone loss. Synonyms: Polyclonal TOB1 antibody, Anti-TOB1 antibody.

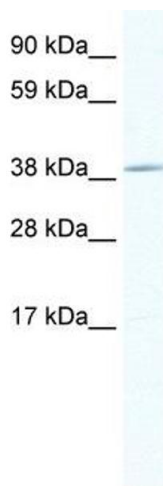
## Application Details

Application Notes:	WB: 1.25 µg/mL Optimal conditions should be determined by the investigator.
Comment:	TOB1 Blocking Peptide, catalog no. 33R-7679, is also available for use as a blocking control in assays to test for specificity of this TOB1 antibody
Restrictions:	For Research Use only

## Handling

Format:	Lyophilized
Concentration:	Lot specific
Buffer:	Lyophilized powder. Add 100 µL of distilled water. Final antibody concentration is 1 mg/mL in PBS buffer.
Handling Advice:	Avoid repeated freeze/thaw cycles.
Storage:	4 °C/-20 °C
Storage Comment:	Store at 4 °C, following reconstitution, aliquot and store at -20 °C.

## Images



### Western Blotting

**Image 1.** TOB1 antibody (20R-1130) used at 0.2-1 µg/ml to detect target protein.