

Datasheet for ABIN925837
anti-ECSIT antibody (Middle Region)



[Go to Product page](#)

1 Image

Overview

Quantity:	100 µg
Target:	ECSIT
Binding Specificity:	Middle Region
Reactivity:	Human, Mouse, Rat, Cow, Dog
Host:	Rabbit
Clonality:	Polyclonal
Conjugate:	This ECSIT antibody is un-conjugated
Application:	Western Blotting (WB)

Product Details

Immunogen:	SITPEC antibody was raised in rabbit using the middle region of SITPEC as the immunogen
Cross-Reactivity:	Human, Rat (Rattus), Dog (Canine), Cow (Bovine)

Target Details

Target:	ECSIT
Alternative Name:	SITPEC (ECSIT Products)
Background:	Sitpec functions as an essential component in two important signal transduction pathways and establishes a novel role for Ecsit as a cofactor for Smad proteins in the bone morphogenetic protein signaling pathway. Synonyms: Polyclonal SITPEC antibody, Anti-SITPEC antibody.
Pathways:	TLR Signaling , Toll-Like Receptors Cascades , SARS-CoV-2 Protein Interactome

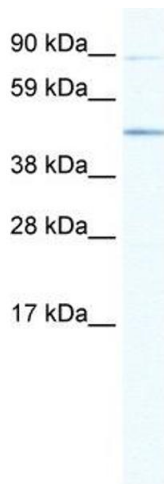
Application Details

Application Notes:	WB: 1.25 µg/mL Optimal conditions should be determined by the investigator.
Comment:	SITPEC Blocking Peptide, catalog no. 33R-4726, is also available for use as a blocking control in assays to test for specificity of this SITPEC antibody
Restrictions:	For Research Use only

Handling

Format:	Lyophilized
Concentration:	Lot specific
Buffer:	Lyophilized powder. Add 100 µL of distilled water. Final antibody concentration is 1 mg/mL in PBS buffer.
Handling Advice:	Avoid repeated freeze/thaw cycles.
Storage:	4 °C/-20 °C
Storage Comment:	Store at 4 °C, following reconstitution, aliquot and store at -20 °C.

Images



Western Blotting

Image 1. SITPEC antibody (20R-1136) used at 1 µg/ml to detect target protein.