

Datasheet for ABIN925844 **anti-RBM14 antibody (N-Term)**



[Go to Product page](#)

1 Image

Overview

Quantity:	100 µg
Target:	RBM14
Binding Specificity:	N-Term
Reactivity:	Human, Mouse, Rat, Cow, Dog
Host:	Rabbit
Clonality:	Polyclonal
Conjugate:	This RBM14 antibody is un-conjugated
Application:	Western Blotting (WB)

Product Details

Immunogen:	RBM14 antibody was raised in rabbit using the N terminal of RBM14 as the immunogen
Cross-Reactivity:	Rat (Rattus), Dog (Canine), Cow (Bovine), Human

Target Details

Target:	RBM14
Alternative Name:	RBM14 (RBM14 Products)
Background:	RBM14 is a RNA-binding protein (RBP). RBP contribute to gene expression by regulating the form, abundance, and stability of both coding and non-coding RNA. In the vertebrate brain, RBPs account for many distinctive features of RNA processing such as activity-dependent transcript localization and localized protein synthesis. Synonyms: Polyclonal RBM14 antibody, Anti-RBM14 antibody.

Target Details

Pathways: [Intracellular Steroid Hormone Receptor Signaling Pathway](#)

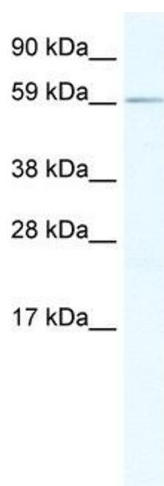
Application Details

Application Notes:	WB: 1.25 µg/mL Optimal conditions should be determined by the investigator.
Comment:	RBM14 Blocking Peptide, catalog no. 33R-4312, is also available for use as a blocking control in assays to test for specificity of this RBM14 antibody
Restrictions:	For Research Use only

Handling

Format:	Lyophilized
Concentration:	Lot specific
Buffer:	Lyophilized powder. Add 100 µL of distilled water. Final antibody concentration is 1 mg/mL in PBS buffer.
Handling Advice:	Avoid repeated freeze/thaw cycles.
Storage:	4 °C/-20 °C
Storage Comment:	Store at 4 °C, following reconstitution, aliquot and store at -20 °C.

Images



Western Blotting

Image 1. Western Blot showing RBM14 antibody used at a concentration of 1-2 ug/ml to detect its target protein.