

Datasheet for ABIN925845  
**anti-TSG101 antibody (Middle Region)**



[Go to Product page](#)

2 Images

## Overview

Quantity:	100 µg
Target:	TSG101
Binding Specificity:	Middle Region
Reactivity:	Human, Mouse, Rat, Dog, Cow, Chicken
Host:	Rabbit
Clonality:	Polyclonal
Conjugate:	This TSG101 antibody is un-conjugated
Application:	Western Blotting (WB), Immunohistochemistry (IHC)

## Product Details

Immunogen:	TSG101 antibody was raised in rabbit using the middle region of TSG101 as the immunogen
Cross-Reactivity:	Rat (Rattus), Cow (Bovine), Chicken, Dog (Canine), Human

## Target Details

Target:	TSG101
Alternative Name:	TSG101 ( <a href="#">TSG101 Products</a> )
Background:	TSG101 has a direct role in the control of growth and differentiation in primary epithelial cells. It is required for normal cell function of embryonic and adult tissues but that this gene is not a tumor suppressor for sporadic forms of breast cancer. Synonyms: Polyclonal TSG101 antibody, Anti-TSG101 antibody.

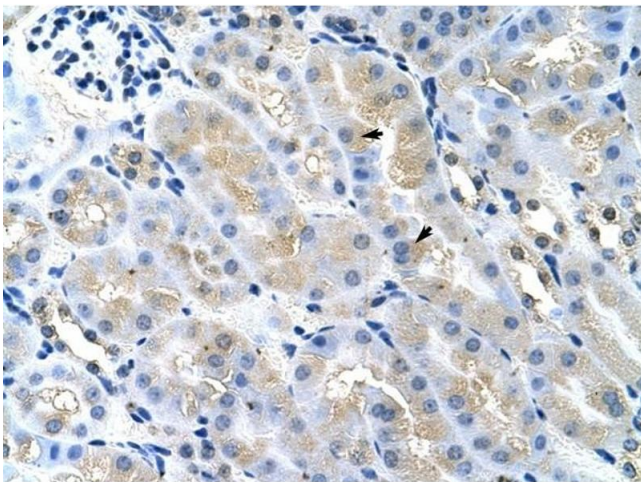
## Application Details

Application Notes:	WB: 1.25 µg/mL Optimal conditions should be determined by the investigator.
Comment:	TSG101 Blocking Peptide, catalog no. 33R-8177, is also available for use as a blocking control in assays to test for specificity of this TSG101 antibody
Restrictions:	For Research Use only

## Handling

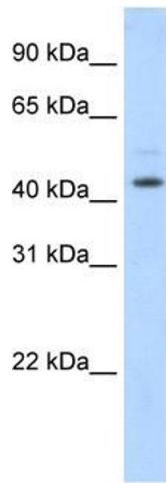
Format:	Lyophilized
Concentration:	Lot specific
Buffer:	Lyophilized powder. Add 100 µL of distilled water. Final antibody concentration is 1 mg/mL in PBS buffer.
Handling Advice:	Avoid repeated freeze/thaw cycles.
Storage:	4 °C/-20 °C
Storage Comment:	Store at 4 °C, following reconstitution, aliquot and store at -20 °C.

## Images



### Immunohistochemistry

**Image 1.** TSG101 antibody was used for immunohistochemistry at a concentration of 4-8 ug/ml to stain Epithelial cells of renal tubule (arrows) in Mouse Kidney. Magnification is at 400X



### Western Blotting

**Image 2.** Western Blot showing TSG101 antibody used at a concentration of 1-2 ug/ml to detect its target protein.