

Datasheet for ABIN925852 **anti-ISL2 antibody (C-Term)**



[Go to Product page](#)

1 Image

Overview

Quantity:	100 µg
Target:	ISL2
Binding Specificity:	C-Term
Reactivity:	Human, Mouse, Rat, Cow, Chicken
Host:	Rabbit
Clonality:	Polyclonal
Conjugate:	This ISL2 antibody is un-conjugated
Application:	Western Blotting (WB)

Product Details

Immunogen:	ISL2 antibody was raised in rabbit using the C terminal of ISL2 as the immunogen
Cross-Reactivity:	Rat (Rattus), Chicken, Human, Cow (Bovine)

Target Details

Target:	ISL2
Alternative Name:	ISL2 (ISL2 Products)
Background:	Isl2 specifies RGC laterality by repressing an ipsilateral pathfinding program unique to VTC RGCs and involving Zic2 and EphB1. This genetic hierarchy controls binocular vision. Synonyms: Polyclonal ISL2 antibody, Anti-ISL2 antibody.

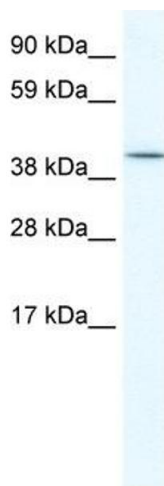
Application Details

Application Notes:	WB: 5 µg/mL Optimal conditions should be determined by the investigator.
Comment:	ISL2 Blocking Peptide, catalog no. 33R-9609, is also available for use as a blocking control in assays to test for specificity of this ISL2 antibody
Restrictions:	For Research Use only

Handling

Format:	Lyophilized
Concentration:	Lot specific
Buffer:	Lyophilized powder. Add 100 µL of distilled water. Final antibody concentration is 1 mg/mL in PBS buffer.
Handling Advice:	Avoid repeated freeze/thaw cycles.
Storage:	4 °C/-20 °C
Storage Comment:	Store at 4 °C, following reconstitution, aliquot and store at -20 °C.

Images



Western Blotting

Image 1. ISL2 antibody (20R-1151) used at 0.2-1 µg/ml to detect target protein.