

Datasheet for ABIN925854  
**anti-BRF1 antibody (C-Term)**



[Go to Product page](#)

1 Image

## Overview

Quantity:	100 µg
Target:	BRF1
Binding Specificity:	C-Term
Reactivity:	Mouse, Rat, Drosophila melanogaster
Host:	Rabbit
Clonality:	Polyclonal
Conjugate:	This BRF1 antibody is un-conjugated
Application:	Western Blotting (WB)

## Product Details

Immunogen:	BRF1 antibody was raised in rabbit using the C terminal of BRF1 as the immunogen
Cross-Reactivity:	Rat (Rattus), Fruit Fly (Drosophila melanogaster)

## Target Details

Target:	BRF1
Alternative Name:	BRF1 ( <a href="#">BRF1 Products</a> )
Background:	BRF1 is one of the three subunits of the RNA polymerase III transcription factor complex. This complex plays a central role in transcription initiation by RNA polymerase III on genes encoding tRNA, 5S rRNA, and other small structural RNAs. Synonyms: Polyclonal BRF1 antibody, Anti-BRF1 antibody.

## Application Details

---

Application Notes:	WB: 1.25 µg/mL Optimal conditions should be determined by the investigator.
Comment:	BRF1 Blocking Peptide, catalog no. 33R-6963, is also available for use as a blocking control in assays to test for specificity of this BRF1 antibody
Restrictions:	For Research Use only

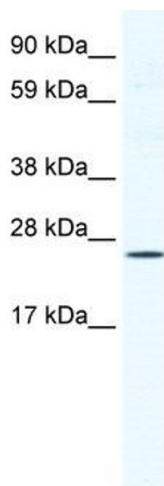
## Handling

---

Format:	Lyophilized
Concentration:	Lot specific
Buffer:	Lyophilized powder. Add 100 µL of distilled water. Final antibody concentration is 1 mg/mL in PBS buffer.
Handling Advice:	Avoid repeated freeze/thaw cycles.
Storage:	4 °C/-20 °C
Storage Comment:	Store at 4 °C, following reconstitution, aliquot and store at -20 °C.

## Images

---



### Western Blotting

**Image 1.** BRF1 antibody (20R-1153) used at 2.5 µg/ml to detect target protein.