

Datasheet for ABIN925857
anti-RNF6 antibody (N-Term)



[Go to Product page](#)

3 Images

Overview

Quantity:	100 µg
Target:	RNF6
Binding Specificity:	N-Term
Reactivity:	Mouse, Rat
Host:	Rabbit
Clonality:	Polyclonal
Conjugate:	This RNF6 antibody is un-conjugated
Application:	Western Blotting (WB), Immunohistochemistry (IHC)

Product Details

Immunogen:	RNF6 antibody was raised in rabbit using the N terminal of RNF6 as the immunogen
Cross-Reactivity:	Rat (Rattus)

Target Details

Target:	RNF6
Alternative Name:	RNF6 (RNF6 Products)
Background:	Rnf6 is involved in neuronal development. High Rnf6 protein levels can be detected in developing axonal projections of motor and DRG neurons during mouse embryogenesis. Synonyms: Polyclonal RNF6 antibody, Anti-RNF6 antibody.
Pathways:	Intracellular Steroid Hormone Receptor Signaling Pathway , Regulation of Intracellular Steroid Hormone Receptor Signaling , Regulation of Cell Size

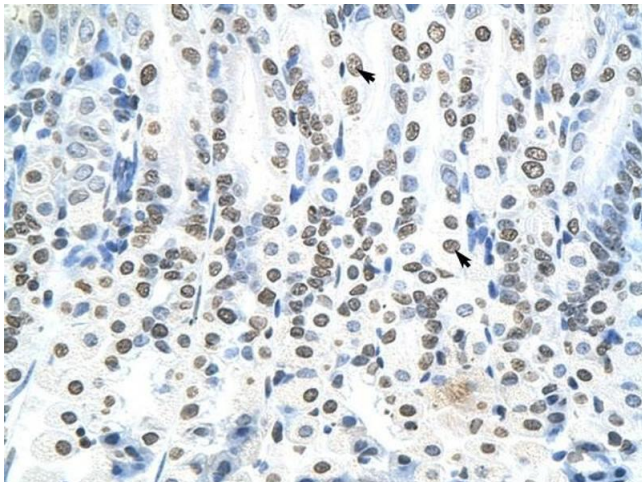
Application Details

Application Notes:	WB: 1.25 µg/mL Optimal conditions should be determined by the investigator.
Comment:	RNF6 Blocking Peptide, catalog no. 33R-5861, is also available for use as a blocking control in assays to test for specificity of this RNF6 antibody
Restrictions:	For Research Use only

Handling

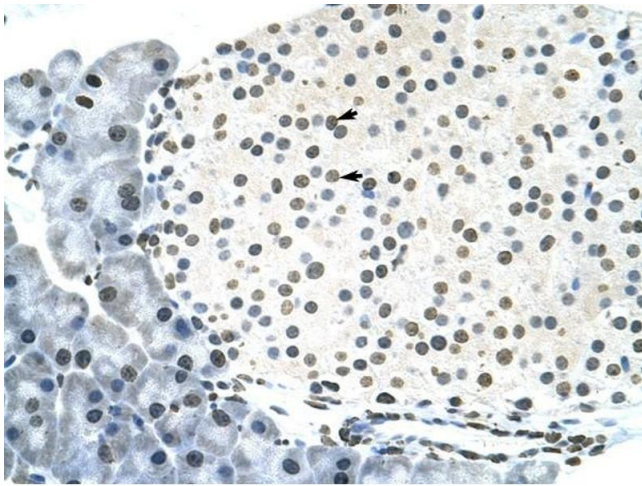
Format:	Lyophilized
Concentration:	Lot specific
Buffer:	Lyophilized powder. Add 100 µL of distilled water. Final antibody concentration is 1 mg/mL in PBS buffer.
Handling Advice:	Avoid repeated freeze/thaw cycles.
Storage:	4 °C/-20 °C
Storage Comment:	Store at 4 °C, following reconstitution, aliquot and store at -20 °C.

Images



Immunohistochemistry

Image 1. RNF6 antibody was used for immunohistochemistry at a concentration of 4-8 µg/ml to stain Epithelial cells of intestinal villus (arrows) in Mouse Intestine. Magnification is at 400X



Immunohistochemistry

Image 2. RNF6 antibody was used for immunohistochemistry at a concentration of 4-8 ug/ml to stain Pancreas islet cell (arrows) in Mouse Pancreas. Magnification is at 400X.



Western Blotting

Image 3. RNF6 antibody (20R-1156) used at 0.2-1 ug/ml to detect target protein.