

Datasheet for ABIN925859
anti-SPZ1 antibody (C-Term)



[Go to Product page](#)

1 Image

Overview

Quantity:	100 µg
Target:	SPZ1
Binding Specificity:	C-Term
Reactivity:	Mouse
Host:	Rabbit
Clonality:	Polyclonal
Conjugate:	This SPZ1 antibody is un-conjugated
Application:	Western Blotting (WB)

Product Details

Immunogen:	SPZ1 antibody was raised in rabbit using the C terminal of SPZ1 as the immunogen
------------	--

Target Details

Target:	SPZ1
Alternative Name:	SPZ1 (SPZ1 Products)
Background:	Spz1, a novel bHLH-Zip protein, is specifically expressed in testis. Synonyms: Polyclonal SPZ1 antibody, Anti-SPZ1 antibody.
Pathways:	MAPK Signaling

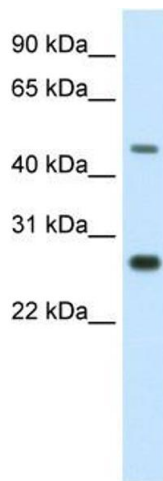
Application Details

Application Notes:	WB: 2.5 µg/mL Optimal conditions should be determined by the investigator.
Comment:	SPZ1 Blocking Peptide, catalog no. 33R-4451, is also available for use as a blocking control in assays to test for specificity of this SPZ1 antibody
Restrictions:	For Research Use only

Handling

Format:	Lyophilized
Concentration:	Lot specific
Buffer:	Lyophilized powder. Add 100 µL of distilled water. Final antibody concentration is 1 mg/mL in PBS buffer.
Handling Advice:	Avoid repeated freeze/thaw cycles.
Storage:	4 °C/-20 °C
Storage Comment:	Store at 4 °C, following reconstitution, aliquot and store at -20 °C.

Images



Western Blotting

Image 1. SPZ1 antibody (20R-1158) used at 0.2-1 µg/ml to detect target protein.