

Datasheet for ABIN925861
anti-TCF23 antibody (C-Term)



[Go to Product page](#)

1 Image

Overview

Quantity:	100 µg
Target:	TCF23
Binding Specificity:	C-Term
Reactivity:	Mouse
Host:	Rabbit
Clonality:	Polyclonal
Conjugate:	This TCF23 antibody is un-conjugated
Application:	Western Blotting (WB)

Product Details

Immunogen: TCF23 antibody was raised in rabbit using the C terminal of TCF23 as the immunogen

Target Details

Target:	TCF23
Alternative Name:	TCF23 (TCF23 Products)
Background:	TCF23 belongs to the basic helix-loop-helix (bHLH) family are involved in various cell differentiation processes. Synonyms: Polyclonal TCF23 antibody, Anti-TCF23 antibody.

Application Details

Application Notes: WB: 2.5 µg/mL
Optimal conditions should be determined by the investigator.

Application Details

Comment: TCF23 Blocking Peptide, catalog no. 33R-7226, is also available for use as a blocking control in assays to test for specificity of this TCF23 antibody

Restrictions: For Research Use only

Handling

Format: Lyophilized

Concentration: Lot specific

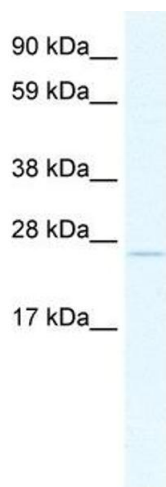
Buffer: Lyophilized powder. Add 100 μ L of distilled water. Final antibody concentration is 1 mg/mL in PBS buffer.

Handling Advice: Avoid repeated freeze/thaw cycles.

Storage: 4 °C/-20 °C

Storage Comment: Store at 4 °C, following reconstitution, aliquot and store at -20 °C.

Images



Western Blotting

Image 1. TCF23 antibody (20R-1160) used at 0.2-1 μ g/ml to detect target protein.