

Datasheet for ABIN925864
anti-CES4A antibody (Middle Region)



[Go to Product page](#)

1 Image

Overview

Quantity:	100 µg
Target:	CES4A
Binding Specificity:	Middle Region
Reactivity:	Mouse, Rat
Host:	Rabbit
Clonality:	Polyclonal
Conjugate:	This CES4A antibody is un-conjugated
Application:	Western Blotting (WB)

Product Details

Immunogen:	CES6 antibody was raised in rabbit using the middle region of CES6 as the immunogen
Cross-Reactivity:	Rat (Rattus)

Target Details

Target:	CES4A
Alternative Name:	CES6 (CES4A Products)
Background:	Mouse Ces6 is a member of carboxylesterases family. Carboxylesterases are enzymes that catalyze the hydrolysis of a wide range of ester-containing endogenous and xenobiotic compounds. Synonyms: Polyclonal CES6 antibody, Anti-CES6 antibody.

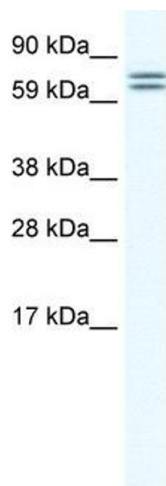
Application Details

Application Notes:	WB: 1.25 µg/mL Optimal conditions should be determined by the investigator.
Comment:	CES6 Blocking Peptide, catalog no. 33R-6344, is also available for use as a blocking control in assays to test for specificity of this CES6 antibody
Restrictions:	For Research Use only

Handling

Format:	Lyophilized
Concentration:	Lot specific
Buffer:	Lyophilized powder. Add 100 µL of distilled water. Final antibody concentration is 1 mg/mL in PBS buffer.
Handling Advice:	Avoid repeated freeze/thaw cycles.
Storage:	4 °C/-20 °C
Storage Comment:	Store at 4 °C, following reconstitution, aliquot and store at -20 °C.

Images



Western Blotting

Image 1. CES6 antibody (20R-1163) used at 0.2-1 µg/ml to detect target protein.