

Datasheet for ABIN925872  
**anti-E2F7 antibody (N-Term)**



[Go to Product page](#)

1 Image

## Overview

Quantity:	100 µg
Target:	E2F7
Binding Specificity:	N-Term
Reactivity:	Human, Mouse, Dog, Rat, Cow, Chicken
Host:	Rabbit
Clonality:	Polyclonal
Conjugate:	This E2F7 antibody is un-conjugated
Application:	Western Blotting (WB)

## Product Details

Immunogen:	E2 F7 antibody was raised in rabbit using the N terminal of E2 7 as the immunogen
Cross-Reactivity:	Rat (Rattus), Cow (Bovine), Chicken, Dog (Canine), Human

## Target Details

Target:	E2F7
Alternative Name:	<a href="#">E2F7 (E2F7 Products)</a>
Background:	E2F7 is a E2F family member. It can block the E2F-dependent activation of a subset of E2F target genes as well as mitigate cellular proliferation of mouse embryo fibroblasts. Synonyms: Polyclonal E2F7 antibody, Anti-E2F7 antibody.

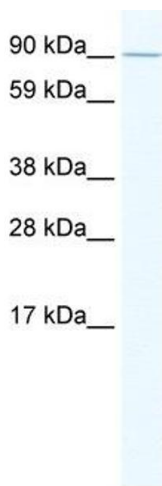
## Application Details

Application Notes:	WB: 2.5 µg/mL Optimal conditions should be determined by the investigator.
Comment:	E2F7 Blocking Peptide, catalog no. 33R-4945, is also available for use as a blocking control in assays to test for specificity of this E2F7 antibody
Restrictions:	For Research Use only

## Handling

Format:	Lyophilized
Concentration:	Lot specific
Buffer:	Lyophilized powder. Add 100 µL of distilled water. Final antibody concentration is 1 mg/mL in PBS buffer.
Handling Advice:	Avoid repeated freeze/thaw cycles.
Storage:	4 °C/-20 °C
Storage Comment:	Store at 4 °C, following reconstitution, aliquot and store at -20 °C.

## Images



### Western Blotting

**Image 1.** E2F7 antibody (20R-1171) used at 0.2-1 µg/ml to detect target protein.