

Datasheet for ABIN925878  
**anti-Tbpl2 antibody (N-Term)**



[Go to Product page](#)

1 Image

## Overview

Quantity:	100 µg
Target:	Tbpl2
Binding Specificity:	N-Term
Reactivity:	Mouse, Rat
Host:	Rabbit
Clonality:	Polyclonal
Conjugate:	This Tbpl2 antibody is un-conjugated
Application:	Western Blotting (WB)

## Product Details

Immunogen:	TRF3 antibody was raised in rabbit using the N terminal of TRF3 as the immunogen
Cross-Reactivity:	Rat (Rattus)

## Target Details

Target:	Tbpl2
Alternative Name:	<a href="#">TRF3 (Tbpl2 Products)</a>
Background:	TRF3 is a nuclear protein that is present in all human and mouse tissues and cell lines examined. Synonyms: Polyclonal TRF3 antibody, Anti-TRF3 antibody.
Pathways:	<a href="#">Protein targeting to Nucleus, Platelet-derived growth Factor Receptor Signaling</a>

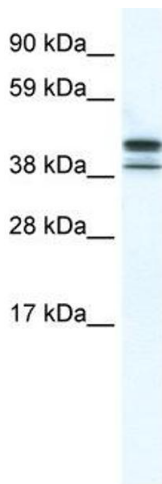
## Application Details

Application Notes:	WB: 5 µg/mL Optimal conditions should be determined by the investigator.
Comment:	TRF3 Blocking Peptide, catalog no. 33R-2922, is also available for use as a blocking control in assays to test for specificity of this TRF3 antibody
Restrictions:	For Research Use only

## Handling

Format:	Lyophilized
Concentration:	Lot specific
Buffer:	Lyophilized powder. Add 100 µL of distilled water. Final antibody concentration is 1 mg/mL in PBS buffer.
Handling Advice:	Avoid repeated freeze/thaw cycles.
Storage:	4 °C/-20 °C
Storage Comment:	Store at 4 °C, following reconstitution, aliquot and store at -20 °C.

## Images



### Western Blotting

**Image 1.** TRF3 antibody (20R-1177) used at 0.2-1 µg/ml to detect target protein.