

Datasheet for ABIN925885 **anti-SPI1 antibody (N-Term)**



[Go to Product page](#)

1 Image

Overview

Quantity:	100 µg
Target:	SPI1
Binding Specificity:	N-Term
Reactivity:	Human, Mouse, Rat, Pig, Dog, Cow, Zebrafish (Danio rerio), Chicken
Host:	Rabbit
Clonality:	Polyclonal
Conjugate:	This SPI1 antibody is un-conjugated
Application:	Western Blotting (WB)

Product Details

Immunogen:	SFPI1 antibody was raised in rabbit using the N terminal of SFPI1 as the immunogen
Cross-Reactivity:	Rat (Rattus), Cow (Bovine), Dog (Canine), Zebrafish (Brachydanio rerio), Pig (Porcine), Human, Chicken

Target Details

Target:	SPI1
Alternative Name:	SFPI1 (SPI1 Products)
Background:	Sfpi1 binds to the PU-box, a purine-rich DNA sequence (5'-GAGGAA-3') that can act as a lymphoid-specific enhancer. Sfpi1 is a transcriptional activator that may be specifically involved in the differentiation or activation of macrophages or B-cells. Sfpi1 also binds RNA and may modulate pre-mRNA splicing. Synonyms: Polyclonal SFPI1 antibody, Anti-SFPI1 antibody.

Target Details

Pathways: [Stem Cell Maintenance](#)

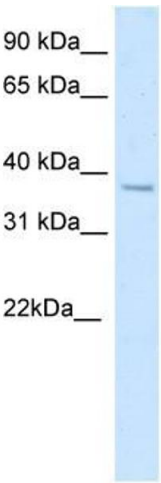
Application Details

Application Notes:	WB: 5 µg/mL Optimal conditions should be determined by the investigator.
Comment:	SFPI1 Blocking Peptide, catalog no. 33R-6668, is also available for use as a blocking control in assays to test for specificity of this SFPI1 antibody
Restrictions:	For Research Use only

Handling

Format:	Lyophilized
Concentration:	Lot specific
Buffer:	Lyophilized powder. Add 100 µL of distilled water. Final antibody concentration is 1 mg/mL in PBS buffer.
Handling Advice:	Avoid repeated freeze/thaw cycles.
Storage:	4 °C/-20 °C
Storage Comment:	Store at 4 °C, following reconstitution, aliquot and store at -20 °C.

Images



Western Blotting

Image 1. SFPI1 antibody (20R-1184) used at 0.2-1 ug/ml to detect target protein.