

Datasheet for ABIN925888
anti-TAF7L antibody (Middle Region)



[Go to Product page](#)

1 Image

Overview

Quantity:	100 µg
Target:	TAF7L
Binding Specificity:	Middle Region
Reactivity:	Human, Mouse, Rat
Host:	Rabbit
Clonality:	Polyclonal
Application:	Western Blotting (WB)

Product Details

Immunogen:	TAF7 L antibody was raised in rabbit using the middle region of TAF7 as the immunogen
Cross-Reactivity:	Rat (Rattus), Human

Target Details

Target:	TAF7L
Alternative Name:	TAF7L (TAF7L Products)
Background:	TAF7L belongs to the family of TATA box binding protein (Tbp)-associated factors. Promoter selectivity for all three classes of eukaryotic RNA polymerases is brought about by multimeric protein complexes containing TATA box binding protein (TBP) and specific TBP-associated factors (TAFs). Synonyms: Polyclonal TAF7L antibody, Anti-TAF7L antibody.

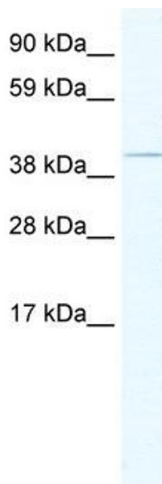
Application Details

Application Notes:	WB: 1.25 µg/mL Optimal conditions should be determined by the investigator.
Comment:	TAF7L Blocking Peptide, catalog no. 33R-2432, is also available for use as a blocking control in assays to test for specificity of this TAF7L antibody
Restrictions:	For Research Use only

Handling

Format:	Lyophilized
Concentration:	Lot specific
Buffer:	Lyophilized powder. Add 100 µL of distilled water. Final antibody concentration is 1 mg/mL in PBS buffer.
Handling Advice:	Avoid repeated freeze/thaw cycles.
Storage:	4 °C/-20 °C
Storage Comment:	Store at 4 °C, following reconstitution, aliquot and store at -20 °C.

Images



Western Blotting

Image 1. TAF7L antibody (20R-1187) used at 0.2-1 µg/ml to detect target protein.