

Datasheet for ABIN925889 **anti-RFX5 antibody (N-Term)**



[Go to Product page](#)

1 Image

Overview

| | |
|----------------------|-----------------------|
| Quantity: | 100 µg |
| Target: | RFX5 |
| Binding Specificity: | N-Term |
| Reactivity: | Human, Dog, Rabbit |
| Host: | Rabbit |
| Clonality: | Polyclonal |
| Application: | Western Blotting (WB) |

Product Details

| | |
|-------------------|--|
| Immunogen: | RFX5 antibody was raised in rabbit using the N terminal of RFX5 as the immunogen |
| Cross-Reactivity: | Rabbit, Dog (Canine) |

Target Details

| | |
|-------------------|--|
| Target: | RFX5 |
| Alternative Name: | RFX5 (RFX5 Products) |

Background: RFX5 is the fifth member of the growing family of DNA-binding proteins sharing a novel and highly characteristic DNA-binding domain called the RFX motif. RFX is a nuclear protein complex that binds to the X box of MHC-II promoters. The lack of RFX binding activity in complementation group C results from mutations in the RFX5 gene encoding the 75-kD subunit of RFX. A lack of MHC-II expression results in a severe immunodeficiency syndrome called MHC-II deficiency, or the bare lymphocyte syndrome. Synonyms: Polyclonal RFX5 antibody,

Target Details

Anti-RFX5 antibody, regulatory factor X, 5, influences HLA class II expression antibody.

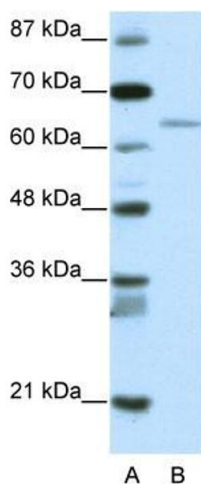
Application Details

| | |
|--------------------|--|
| Application Notes: | WB: 2.5 µg/mL Optimal conditions should be determined by the investigator. |
| Comment: | RFX5 Blocking Peptide, catalog no. 33R-5632, is also available for use as a blocking control in assays to test for specificity of this RFX5 antibody |
| Restrictions: | For Research Use only |

Handling

| | |
|------------------|---|
| Format: | Lyophilized |
| Concentration: | Lot specific |
| Buffer: | Lyophilized powder. Add 100 µL of distilled water. Final antibody concentration is 1 mg/mL in PBS buffer. |
| Handling Advice: | Avoid repeated freeze/thaw cycles. |
| Storage: | 4 °C/-20 °C |
| Storage Comment: | Store at 4 °C, following reconstitution, aliquot and store at -20 °C. |

Images



Western Blotting

Image 1. RFX5 antibody (20R-1188) used at 0.2-1 µg/ml to detect target protein.