

Datasheet for ABIN925890
anti-BTF3 antibody (Middle Region)



[Go to Product page](#)

1 Image

Overview

Quantity:	100 µg
Target:	BTF3
Binding Specificity:	Middle Region
Reactivity:	Human, Mouse, Rat, Dog, Zebrafish (Danio rerio), Cow, Xenopus laevis
Host:	Rabbit
Clonality:	Polyclonal
Conjugate:	This BTF3 antibody is un-conjugated
Application:	Western Blotting (WB)

Product Details

Immunogen:	BTF3 antibody was raised in rabbit using the middle region of BTF3 as the immunogen
Cross-Reactivity:	Mouse (Murine), Rat (Rattus), Dog (Canine), Zebrafish (Brachydanio rerio), Frog, Cow (Bovine)

Target Details

Target:	BTF3
Alternative Name:	BTF3 (BTF3 Products)
Background:	BTF3 forms a stable complex with RNA polymerase IIB and is required for transcriptional initiation. Alternative splicing results in multiple transcript variants encoding different isoforms. This gene has multiple pseudogenes. Synonyms: Polyclonal BTF3 antibody, Anti-BTF3 antibody, basic transcription factor 3 antibody.

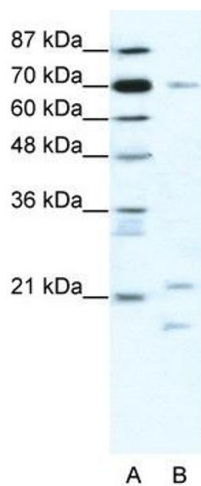
Application Details

Application Notes:	WB: 1.25 µg/mL Optimal conditions should be determined by the investigator.
Comment:	BTF3 Blocking Peptide, catalog no. 33R-2169, is also available for use as a blocking control in assays to test for specificity of this BTF3 antibody
Restrictions:	For Research Use only

Handling

Format:	Lyophilized
Concentration:	Lot specific
Buffer:	Lyophilized powder. Add 100 µL of distilled water. Final antibody concentration is 1 mg/mL in PBS buffer.
Handling Advice:	Avoid repeated freeze/thaw cycles.
Storage:	4 °C/-20 °C
Storage Comment:	Store at 4 °C, following reconstitution, aliquot and store at -20 °C.

Images



Western Blotting

Image 1. BTF3 antibody (20R-1189) used at 0.2-1 µg/ml to detect target protein.