

Datasheet for ABIN925892
anti-MAX antibody (Middle Region)



[Go to Product page](#)

1 Image

Overview

Quantity:	100 µg
Target:	MAX
Binding Specificity:	Middle Region
Reactivity:	Human, Mouse, Rat, Dog, Cow, Zebrafish (Danio rerio), Chicken, Xenopus laevis
Host:	Rabbit
Clonality:	Polyclonal
Conjugate:	This MAX antibody is un-conjugated
Application:	Western Blotting (WB)

Product Details

Immunogen:	MAX antibody was raised in rabbit using the middle region of MAX as the immunogen
Cross-Reactivity:	Mouse (Murine), Dog (Canine), Rat (Rattus), Cow (Bovine), Frog, Chicken, Zebrafish (Brachydanio rerio)

Target Details

Target:	MAX
Alternative Name:	MAX (MAX Products)
Background:	MAX is a member of the basic helix-loop-helix leucine zipper (bHLHZ) family of transcription factors. It is able to form homodimers and heterodimers with other family members, which include Mad, Mxi1 and Myc. Myc is an oncoprotein implicated in cell proliferation, differentiation and apoptosis. The homodimers and heterodimers compete for a common DNA target site (the

Target Details

E box) and rearrangement among these dimer forms provides a complex system of transcriptional regulation. Synonyms: Polyclonal MAX antibody, Anti-MAX antibody, MYC associated factor X antibody.

Pathways: [Mitotic G1-G1/S Phases](#)

Application Details

Application Notes: WB: 1.25 µg/mL

Optimal conditions should be determined by the investigator.

Comment: MAX Blocking Peptide, catalog no. 33R-5344, is also available for use as a blocking control in assays to test for specificity of this MAX antibody

Restrictions: For Research Use only

Handling

Format: Lyophilized

Concentration: Lot specific

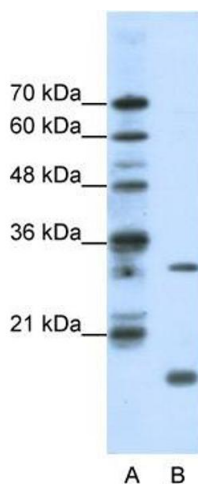
Buffer: Lyophilized powder. Add 100 µL of distilled water. Final antibody concentration is 1 mg/mL in PBS buffer.

Handling Advice: Avoid repeated freeze/thaw cycles.

Storage: 4 °C/-20 °C

Storage Comment: Store at 4 °C, following reconstitution, aliquot and store at -20 °C.

Images



Western Blotting

Image 1. MAX antibody (20R-1191) used at 1.25 ug/ml to detect target protein.