

Datasheet for ABIN925894 **anti-PSMC5 antibody (C-Term)**



[Go to Product page](#)

1 Image

Overview

Quantity:	100 µg
Target:	PSMC5
Binding Specificity:	C-Term
Reactivity:	Human, Mouse, Rat, Cow, Zebrafish (Danio rerio), Dog, Pig, Xenopus laevis, Drosophila melanogaster, C. elegans
Host:	Rabbit
Clonality:	Polyclonal
Conjugate:	This PSMC5 antibody is un-conjugated
Application:	Western Blotting (WB)

Product Details

Immunogen:	PSMC5 antibody was raised in rabbit using the C terminal of PSMC5 as the immunogen
Cross-Reactivity:	Mouse (Murine), Rat (Rattus), Dog (Canine), Caenorhabditis elegans (C. elegans), Fruit Fly (Drosophila melanogaster), Zebrafish (Brachydanio rerio), Frog, Cow (Bovine), Pig (Porcine)

Target Details

Target:	PSMC5
Alternative Name:	PSMC5 (PSMC5 Products)
Background:	The 26S proteasome is a multicatalytic proteinase complex with a highly ordered structure composed of 2 complexes, a 20S core and a 19S regulator. The 19S regulator is composed of a base, which contains 6 ATPase subunits and 2 non-ATPase subunits, and a lid, which contains

Target Details

up to 10 non-ATPase subunits. PSMC5 is one of the ATPase subunits, a member of the triple-A family of ATPases which have a chaperone-like activity. In addition to participation in proteasome functions, this subunit may participate in transcriptional regulation since it has been shown to interact with the thyroid hormone receptor and retinoid X receptor-alpha.

Synonyms: Polyclonal PSMC5 antibody, Anti-PSMC5 antibody, proteasome, prosome, macropain 26S subunit, ATPase, 5 antibody.

Pathways: [Mitotic G1-G1/S Phases](#), [DNA Replication](#), [Synthesis of DNA](#), [Ubiquitin Proteasome Pathway](#)

Application Details

Application Notes: WB: 1.25 µg/mL
Optimal conditions should be determined by the investigator.

Comment: PSMC5 Blocking Peptide, catalog no. 33R-1153, is also available for use as a blocking control in assays to test for specificity of this PSMC5 antibody

Restrictions: For Research Use only

Handling

Format: Lyophilized

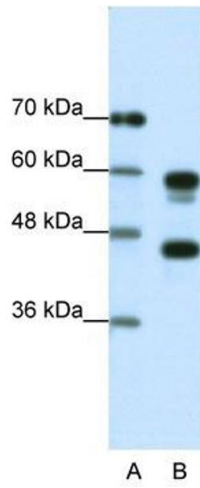
Concentration: Lot specific

Buffer: Lyophilized powder. Add 100 µL of distilled water. Final antibody concentration is 1 mg/mL in PBS buffer.

Handling Advice: Avoid repeated freeze/thaw cycles.

Storage: 4 °C/-20 °C

Storage Comment: Store at 4 °C, following reconstitution, aliquot and store at -20 °C.



Western Blotting

Image 1. Western Blot showing PSMC5 antibody used at a concentration of 1-2 ug/ml to detect its target protein.