

Datasheet for ABIN925897
anti-SNAPC1 antibody (C-Term)



[Go to Product page](#)

1 Image

Overview

Quantity:	100 µg
Target:	SNAPC1
Binding Specificity:	C-Term
Reactivity:	Human
Host:	Rabbit
Clonality:	Polyclonal
Conjugate:	This SNAPC1 antibody is un-conjugated
Application:	Western Blotting (WB)

Product Details

Immunogen: SNAPC1 antibody was raised in rabbit using the C terminal of SNAPC1 as the immunogen

Target Details

Target:	SNAPC1
Alternative Name:	SNAPC1 (SNAPC1 Products)
Background:	SNAPC1 is a part of the SNAPc complex required for the transcription of both RNA polymerase II and III small-nuclear RNA genes. It binds to the proximal sequence element (PSE), a non-TATA-box basal promoter element common to these 2 types of genes and recruits TBP and BRF2 to the U6 snRNA TATA box. Synonyms: Polyclonal SNAPC1 antibody, Anti-SNAPC1 antibody, small nuclear RNA activating complex, polypeptide 1, 43kDa antibody, PTFgamma antibody, SNAP43 antibody.

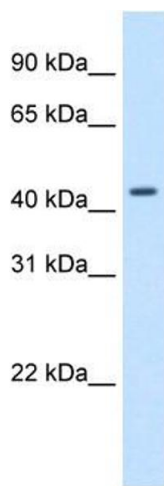
Application Details

Application Notes:	WB: 1.25 µg/mL Optimal conditions should be determined by the investigator.
Comment:	SNAPC1 Blocking Peptide, catalog no. 33R-3495, is also available for use as a blocking control in assays to test for specificity of this SNAPC1 antibody
Restrictions:	For Research Use only

Handling

Format:	Lyophilized
Concentration:	Lot specific
Buffer:	Lyophilized powder. Add 100 µL of distilled water. Final antibody concentration is 1 mg/mL in PBS buffer.
Handling Advice:	Avoid repeated freeze/thaw cycles.
Storage:	4 °C/-20 °C
Storage Comment:	Store at 4 °C, following reconstitution, aliquot and store at -20 °C.

Images



Western Blotting

Image 1. Western Blot showing SNAPC1 antibody used at a concentration of 1-2 µg/ml to detect its target protein.