

Datasheet for ABIN925900 **anti-TIMELESS antibody (C-Term)**



[Go to Product page](#)

1 Image

Overview

Quantity:	100 µg
Target:	TIMELESS
Binding Specificity:	C-Term
Reactivity:	Human, Mouse, Rat, Dog, Drosophila melanogaster
Host:	Rabbit
Clonality:	Polyclonal
Conjugate:	This TIMELESS antibody is un-conjugated
Application:	Western Blotting (WB)

Product Details

Immunogen:	TIMELESS antibody was raised in rabbit using the C terminal of TIMELESS as the immunogen
Cross-Reactivity:	Rat (Rattus), Mouse (Murine), Fruit Fly (Drosophila melanogaster), Dog (Canine)

Target Details

Target:	TIMELESS
Alternative Name:	TIMELESS (TIMELESS Products)
Background:	The human Timeless protein interacts with both the circadian clock protein cryptochrome 2 and with the cell cycle checkpoint proteins Chk1 and the ATR-ATRIP complex and plays an important role in the DNA damage checkpoint response. Down-regulation of Timeless in human cells seriously compromises replication and intra-S checkpoints, indicating an intimate connection between the circadian cycle and the DNA damage checkpoints that is in part

Target Details

mediated by the Timeless protein. Synonyms: Polyclonal TIMELESS antibody, Anti-TIMELESS antibody, timeless homolog, Drosophila antibody.

Pathways: [Protein targeting to Nucleus](#), [Photoperiodism](#)

Application Details

Application Notes: WB: 2.5 µg/mL
Optimal conditions should be determined by the investigator.

Comment: TIMELESS Blocking Peptide, catalog no. 33R-2343, is also available for use as a blocking control in assays to test for specificity of this TIMELESS antibody

Restrictions: For Research Use only

Handling

Format: Lyophilized

Concentration: Lot specific

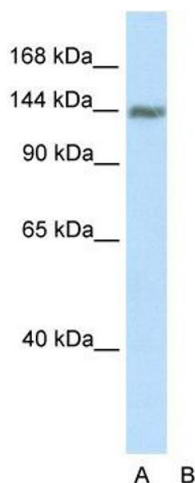
Buffer: Lyophilized powder. Add 100 µL of distilled water. Final antibody concentration is 1 mg/mL in PBS buffer.

Handling Advice: Avoid repeated freeze/thaw cycles.

Storage: 4 °C/-20 °C

Storage Comment: Store at 4 °C, following reconstitution, aliquot and store at -20 °C.

Images



Western Blotting

Image 1. Western Blot showing TIMELESS antibody used at a concentration of 1-2 ug/ml to detect its target protein.