

## Datasheet for ABIN925905 **anti-AKAP9 antibody (N-Term)**



[Go to Product page](#)

### 1 Image

#### Overview

Quantity:	100 µg
Target:	AKAP9
Binding Specificity:	N-Term
Reactivity:	Human, Dog, Mouse, Cow
Host:	Rabbit
Clonality:	Polyclonal
Conjugate:	This AKAP9 antibody is un-conjugated
Application:	Western Blotting (WB)

#### Product Details

Immunogen:	AKAP9 antibody was raised in rabbit using the N terminal of AKAP9 as the immunogen
Cross-Reactivity:	Dog (Canine), Mouse (Murine), Cow (Bovine)

#### Target Details

Target:	AKAP9
Alternative Name:	AKAP9 ( <a href="#">AKAP9 Products</a> )
Background:	The A-kinase anchor proteins (AKAPs) are a group of structurally diverse proteins which have the common function of binding to the regulatory subunit of protein kinase A (PKA) and confining the holoenzyme to discrete locations within the cell. AKAP9 is a member of the AKAP family. Alternate splicing of this gene results in many isoforms that localize to the centrosome and the Golgi apparatus, and interact with numerous signaling proteins from multiple signal

## Target Details

transduction pathways. Synonyms: Polyclonal AKAP9 antibody, Anti-AKAP9 antibody, A kinase, PRKA anchor protein, yotiao 9 antibody.

Pathways: [M Phase, SARS-CoV-2 Protein Interactome](#)

## Application Details

Application Notes: WB: 1.25 µg/mL  
Optimal conditions should be determined by the investigator.

Comment: AKAP9 Blocking Peptide, catalog no. 33R-5898, is also available for use as a blocking control in assays to test for specificity of this AKAP9 antibody

Restrictions: For Research Use only

## Handling

Format: Lyophilized

Concentration: Lot specific

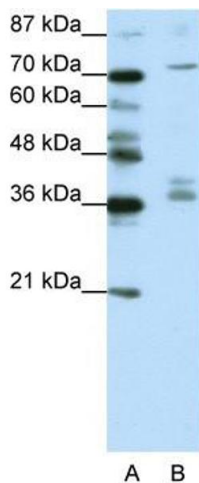
Buffer: Lyophilized powder. Add 100 µL of distilled water. Final antibody concentration is 1 mg/mL in PBS buffer.

Handling Advice: Avoid repeated freeze/thaw cycles.

Storage: 4 °C/-20 °C

Storage Comment: Store at 4 °C, following reconstitution, aliquot and store at -20 °C.

## Images



### Western Blotting

**Image 1.** AKAP9 antibody (20R-1204) used at 0.2-1 µg/ml to detect target protein.