

Datasheet for ABIN925908 **anti-PLAGL1 antibody (N-Term)**



[Go to Product page](#)

1 Image

Overview

Quantity:	100 µg
Target:	PLAGL1
Binding Specificity:	N-Term
Reactivity:	Human, Mouse, Dog, Rat, Cow, Pig, Zebrafish (Danio rerio), Chicken
Host:	Rabbit
Clonality:	Polyclonal
Conjugate:	This PLAGL1 antibody is un-conjugated
Application:	Western Blotting (WB)

Product Details

Immunogen:	PLAGL1 antibody was raised in rabbit using the N terminal of PLAGL1 as the immunogen
Cross-Reactivity:	Dog (Canine), Mouse (Murine), Rat (Rattus), Cow (Bovine), Pig (Porcine), Zebrafish (Brachydanio rerio), Chicken

Target Details

Target:	PLAGL1
Alternative Name:	PLAGL1 (PLAGL1 Products)
Background:	PLAGL1 is a C2H2 zinc finger protein with transactivation and DNA-binding activity. This gene has been shown to exhibit antiproliferative activities and is a tumor suppressor gene candidate. Synonyms: Polyclonal PLAGL1 antibody, Anti-PLAGL1 antibody, pleiomorphic adenoma gene-like 1 antibody.

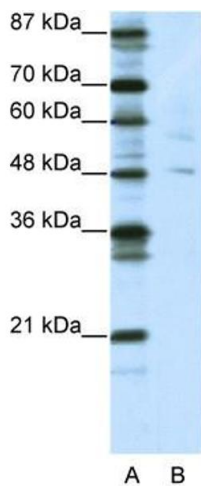
Application Details

Application Notes:	WB: 5 µg/mL Optimal conditions should be determined by the investigator.
Comment:	PLAGL1 Blocking Peptide, catalog no. 33R-5775, is also available for use as a blocking control in assays to test for specificity of this PLAGL1 antibody
Restrictions:	For Research Use only

Handling

Format:	Lyophilized
Concentration:	Lot specific
Buffer:	Lyophilized powder. Add 100 µL of distilled water. Final antibody concentration is 1 mg/mL in PBS buffer.
Handling Advice:	Avoid repeated freeze/thaw cycles.
Storage:	4 °C/-20 °C
Storage Comment:	Store at 4 °C, following reconstitution, aliquot and store at -20 °C.

Images



Western Blotting

Image 1. PLAGL1 antibody (20R-1207) used at 0.2-1 µg/ml to detect target protein.