

## Datasheet for ABIN925909 **anti-LZTR1 antibody (C-Term)**



[Go to Product page](#)

### 1 Image

#### Overview

Quantity:	100 µg
Target:	LZTR1
Binding Specificity:	C-Term
Reactivity:	Human, Mouse, Rat, Dog, Cow, Zebrafish (Danio rerio), Xenopus laevis
Host:	Rabbit
Clonality:	Polyclonal
Conjugate:	This LZTR1 antibody is un-conjugated
Application:	Western Blotting (WB)

#### Product Details

Immunogen:	LZTR1 antibody was raised in rabbit using the C terminal of LZTR1 as the immunogen
Cross-Reactivity:	Mouse (Murine), Rat (Rattus), Dog (Canine), Cow (Bovine), Frog, Zebrafish (Brachydanio rerio)

#### Target Details

Target:	LZTR1
Alternative Name:	LZTR1 ( <a href="#">LZTR1 Products</a> )
Background:	Leucine-zipper-like transcriptional regulator 1(LZTR1) is believed to be a DNA-binding protein and transcriptional regulator based on its predicted structural characteristics. The transcript is present in several essential fetal organs and is hemizyously deleted in some DiGeorge syndrome patients. LZTR1 is thought to play a critical role in embryogenesis. Synonyms: Polyclonal LZTR1 antibody, Anti-LZTR1 antibody, leucine-zipper-like transcription regulator 1

## Target Details

---

antibody.

## Application Details

---

Application Notes:	WB: 2.5 µg/mL Optimal conditions should be determined by the investigator.
Comment:	LZTR1 Blocking Peptide, catalog no. 33R-3269, is also available for use as a blocking control in assays to test for specificity of this LZTR1 antibody
Restrictions:	For Research Use only

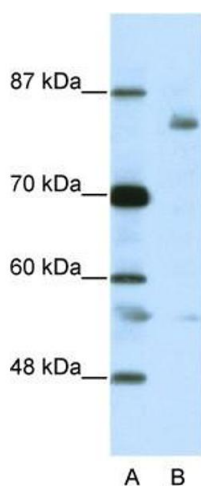
## Handling

---

Format:	Lyophilized
Concentration:	Lot specific
Buffer:	Lyophilized powder. Add 100 µL of distilled water. Final antibody concentration is 1 mg/mL in PBS buffer.
Handling Advice:	Avoid repeated freeze/thaw cycles.
Storage:	4 °C/-20 °C
Storage Comment:	Store at 4 °C, following reconstitution, aliquot and store at -20 °C.

## Images

---



### Western Blotting

**Image 1.** LZTR1 antibody (20R-1208) used at 0.2-1 ug/ml to detect target protein.