

Datasheet for ABIN925912 **anti-MafF antibody (N-Term)**



[Go to Product page](#)

1 Image

Overview

Quantity:	100 µg
Target:	MafF (MAFF)
Binding Specificity:	N-Term
Reactivity:	Human, Mouse, Rat, Dog, Zebrafish (Danio rerio), Drosophila melanogaster, Chicken
Host:	Rabbit
Clonality:	Polyclonal
Conjugate:	This MafF antibody is un-conjugated
Application:	Western Blotting (WB)

Product Details

Immunogen:	MAFF antibody was raised in rabbit using the N terminal of MAFF as the immunogen
Cross-Reactivity:	Mouse (Murine), Rat (Rattus), Dog (Canine), Fruit Fly (Drosophila melanogaster), Zebrafish (Brachydanio rerio), Chicken

Target Details

Target:	MafF (MAFF)
Alternative Name:	MAFF (MAFF Products)
Background:	MAFF is a basic leucine zipper (bZIP) transcription factor that lacks a transactivation domain. It is known to bind the US-2 DNA element in the promoter of the oxytocin receptor (OTR) gene and most likely heterodimerizes with other leucine zipper-containing proteins to enhance expression of the OTR gene during term pregnancy. MAFF can also form homodimers, and

Target Details

since it lacks a transactivation domain, the homodimer may act as a repressor of transcription. MAFF may also be involved in the cellular stress response. Synonyms: Polyclonal MAFF antibody, Anti-MAFF antibody, v-maf musculoaponeurotic fibrosarcoma oncogene homolog F, avian antibody.

Pathways: [Myometrial Relaxation and Contraction](#)

Application Details

Application Notes: WB: 5 µg/mL
Optimal conditions should be determined by the investigator.

Comment: MAFF Blocking Peptide, catalog no. 33R-8927, is also available for use as a blocking control in assays to test for specificity of this MAFF antibody

Restrictions: For Research Use only

Handling

Format: Lyophilized

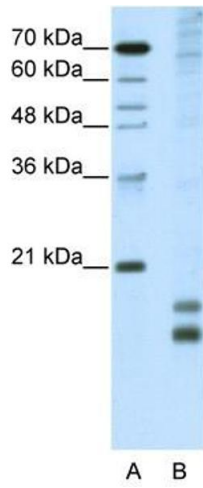
Concentration: Lot specific

Buffer: Lyophilized powder. Add 100 µL of distilled water. Final antibody concentration is 1 mg/mL in PBS buffer.

Handling Advice: Avoid repeated freeze/thaw cycles.

Storage: 4 °C/-20 °C

Storage Comment: Store at 4 °C, following reconstitution, aliquot and store at -20 °C.



Western Blotting

Image 1. MAFF antibody (20R-1211) used at 0.2-1 ug/ml to detect target protein.