

Datasheet for ABIN925914 **anti-CBX6 antibody (N-Term)**



[Go to Product page](#)

2 Images

Overview

Quantity:	100 µg
Target:	CBX6
Binding Specificity:	N-Term
Reactivity:	Human, Mouse, Rat, Dog, Cow, Zebrafish (Danio rerio), Xenopus laevis, Chicken
Host:	Rabbit
Clonality:	Polyclonal
Conjugate:	This CBX6 antibody is un-conjugated
Application:	Western Blotting (WB), Immunohistochemistry (IHC)

Product Details

Immunogen:	CBX6 antibody was raised in rabbit using the N terminal of CBX6 as the immunogen
Cross-Reactivity:	Mouse (Murine), Rat (Rattus), Dog (Canine), Zebrafish (Brachydanio rerio), Frog, Chicken, Cow (Bovine)

Target Details

Target:	CBX6
Alternative Name:	CBX6 (CBX6 Products)
Background:	CBX6 is involved in maintaining the transcriptionally repressive state of genes. It modifies chromatin, rendering it heritably changed in its expressibility. Synonyms: Polyclonal CBX6 antibody, Anti-CBX6 antibody, chromobox homolog 6 antibody.

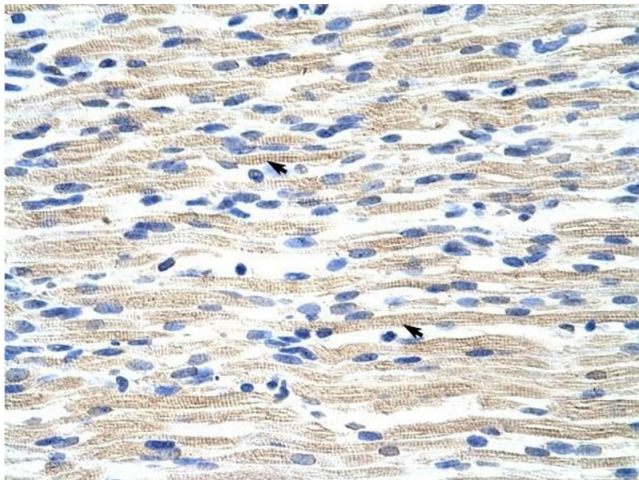
Application Details

Application Notes:	WB: 2.5 µg/mL Optimal conditions should be determined by the investigator.
Comment:	CBX6 Blocking Peptide, catalog no. 33R-2835, is also available for use as a blocking control in assays to test for specificity of this CBX6 antibody
Restrictions:	For Research Use only

Handling

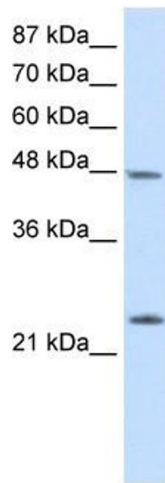
Format:	Lyophilized
Concentration:	Lot specific
Buffer:	Lyophilized powder. Add 100 µL of distilled water. Final antibody concentration is 1 mg/mL in PBS buffer.
Handling Advice:	Avoid repeated freeze/thaw cycles.
Storage:	4 °C/-20 °C
Storage Comment:	Store at 4 °C, following reconstitution, aliquot and store at -20 °C.

Images



Immunohistochemistry

Image 1. CBX6 antibody was used for immunohistochemistry at a concentration of 4-8 µg/ml to stain skeletal muscle cells (arrows) in human muscle. Magnification is at 400X



Western Blotting

Image 2. Western Blot showing CBX6 antibody used at a concentration of 1-2 ug/ml to detect its target protein.