

## Datasheet for ABIN925917 **anti-POGZ antibody (N-Term)**

### 3 Images



[Go to Product page](#)

#### Overview

Quantity:	100 µg
Target:	POGZ
Binding Specificity:	N-Term
Reactivity:	Human, Mouse, Rat, Dog, Cow, Rabbit
Host:	Rabbit
Clonality:	Polyclonal
Conjugate:	This POGZ antibody is un-conjugated
Application:	Western Blotting (WB), Immunohistochemistry (IHC)

#### Product Details

Immunogen:	POGZ antibody was raised in rabbit using the N terminal of POGZ as the immunogen
Cross-Reactivity:	Mouse (Murine), Rat (Rattus), Dog (Canine), Cow (Bovine), Rabbit

#### Target Details

Target:	POGZ
Alternative Name:	POGZ ( <a href="#">POGZ Products</a> )
Background:	<p>POGZ appears to be a zinc finger protein containing a transposase domain at the C-terminus. This protein was found to interact with the transcription factor SP1 in a yeast two-hybrid system. The protein encoded by this gene appears to be a zinc finger protein containing a transposase domain at the C-terminus. This protein was found to interact with the transcription factor SP1 in a yeast two-hybrid system. Synonyms: Polyclonal POGZ antibody, Anti-POGZ</p>

## Target Details

antibody, pogo transposable element with ZNF domain antibody.

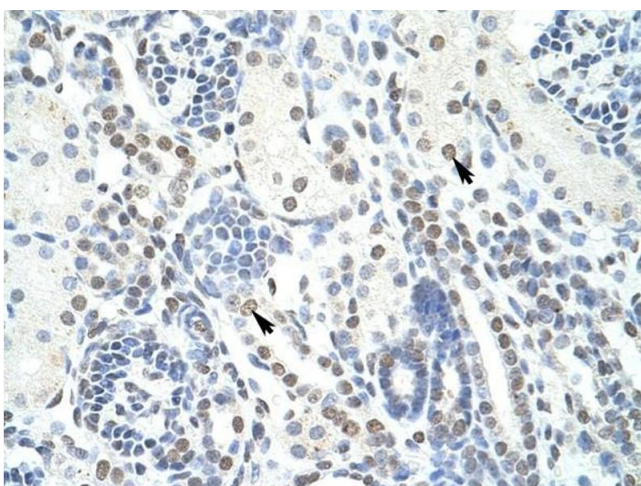
## Application Details

Application Notes:	WB: 5 µg/mL Optimal conditions should be determined by the investigator.
Comment:	POGZ Blocking Peptide, catalog no. 33R-2371, is also available for use as a blocking control in assays to test for specificity of this POGZ antibody
Restrictions:	For Research Use only

## Handling

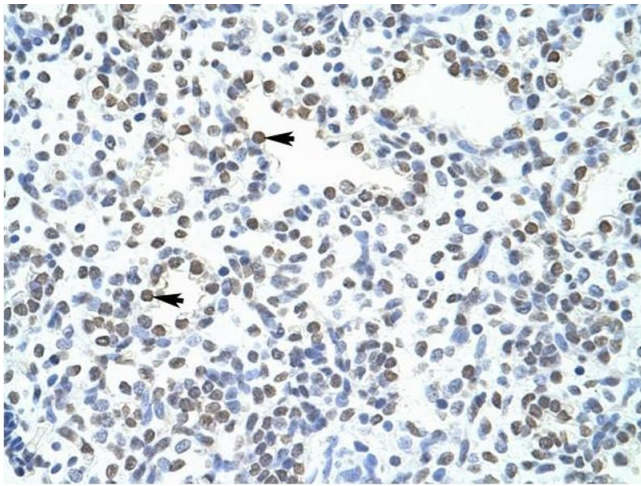
Format:	Lyophilized
Concentration:	Lot specific
Buffer:	Lyophilized powder. Add 100 µL of distilled water. Final antibody concentration is 1 mg/mL in PBS buffer.
Handling Advice:	Avoid repeated freeze/thaw cycles.
Storage:	4 °C/-20 °C
Storage Comment:	Store at 4 °C, following reconstitution, aliquot and store at -20 °C.

## Images



### Immunohistochemistry

**Image 1.** POGZ antibody was used for immunohistochemistry at a concentration of 4-8 µg/ml to stain Epithelial cells of renal tubule (arrows) in Human Kidney. Magnification is at 400X



### Immunohistochemistry

**Image 2.** POGZ antibody was used for immunohistochemistry at a concentration of 4-8 ug/ml to stain Alveolar cells (arrows) in Human Lung. Magnification is at 400X.



### Western Blotting

**Image 3.** Western Blot showing POGZ antibody used at a concentration of 1-2 ug/ml to detect its target protein.