

## Datasheet for ABIN925921 **anti-NR2F2 antibody (N-Term)**



[Go to Product page](#)

### 3 Images

#### Overview

Quantity:	100 µg
Target:	NR2F2
Binding Specificity:	N-Term
Reactivity:	Human, Mouse, Rat, Dog, Cow, Zebrafish (Danio rerio), Chicken, Xenopus laevis
Host:	Rabbit
Clonality:	Polyclonal
Conjugate:	This NR2F2 antibody is un-conjugated
Application:	Western Blotting (WB), Immunohistochemistry (IHC)

#### Product Details

Immunogen:	NR2 F2 antibody was raised in rabbit using the N terminal of NR2 2 as the immunogen
Cross-Reactivity:	Mouse (Murine), Rat (Rattus), Dog (Canine), Cow (Bovine), Chicken, Zebrafish (Brachydanio rerio), Frog

#### Target Details

Target:	NR2F2
Alternative Name:	NR2F2 ( <a href="#">NR2F2 Products</a> )
Background:	NR2F2, an orphan member of the nuclear hormone receptor superfamily, acts as a transcriptional repressor by antagonizing the functions of other nuclear hormone receptors and by actively silencing transcription. However, in certain contexts, NR2F2 stimulates transcription directly. NR2F2, MyoD and p300 interact in a competitive manner, and that increasing amounts

## Target Details

---

of NR2F2 have the ability to reduce the interaction between myoD and p300 invitro. NR2F2 post-transcriptionally regulates myoD activity/function, and that crosstalk between orphan nuclear receptors and the myogenic bHLH proteins has functional consequences for differentiation. Synonyms: Polyclonal NR2F2 antibody, Anti-NR2F2 antibody, nuclear receptor subfamily 2, group F, member 2 antibody, ARP1 antibody, COUP-TFII antibody, COUPTFB antibody, MGC117452 antibody, SVP40 antibody, TFCOUP2 antibody.

Pathways: [Steroid Hormone Mediated Signaling Pathway](#)

## Application Details

---

Application Notes: Optimal conditions should be determined by the investigator.

Comment: NR2F2 Blocking Peptide, catalog no. 33R-7495, is also available for use as a blocking control in assays to test for specificity of this NR2F2 antibody

Restrictions: For Research Use only

## Handling

---

Format: Lyophilized

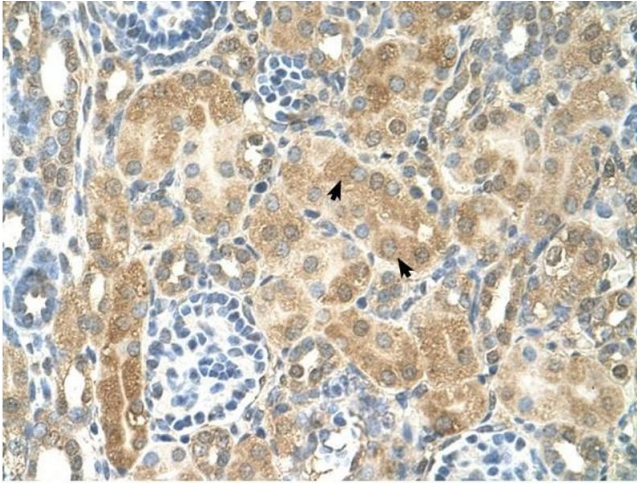
Concentration: Lot specific

Buffer: Lyophilized powder. Add 100 µL of distilled water. Final antibody concentration is 1 mg/mL in PBS buffer.

Handling Advice: Avoid repeated freeze/thaw cycles.

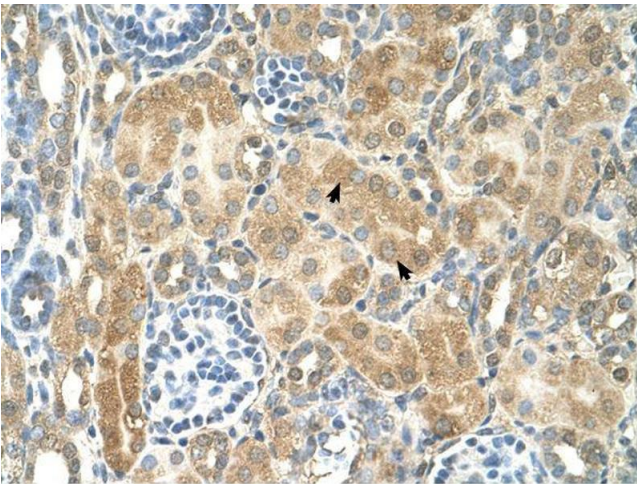
Storage: 4 °C/-20 °C

Storage Comment: Store at 4 °C, following reconstitution, aliquot and store at -20 °C.



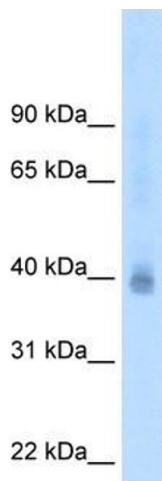
#### Immunohistochemistry

**Image 1.** NR2F2 antibody was used for immunohistochemistry at a concentration of 4-8 ug/ml to stain Epithelial cells of renal tubule (arrows) in Human Kidney. Magnification is at 400X



#### Immunohistochemistry

**Image 2.** NR2F2 antibody was used for immunohistochemistry at a concentration of 4-8 ug/ml. Magnification is at 400X



#### Western Blotting

**Image 3.** Western Blot showing NR2F2 antibody used at a concentration of 2.5 ug/ml against MCF7 Cell Lysate